

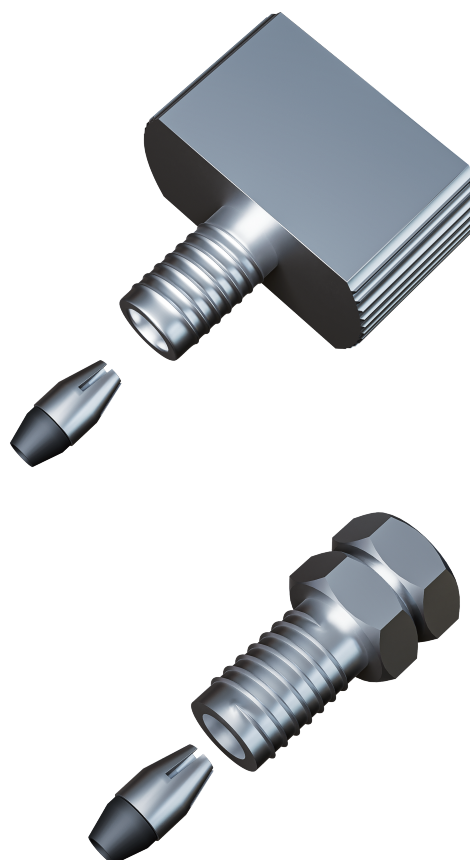
HPLC Accessories

High Pressure Fittings

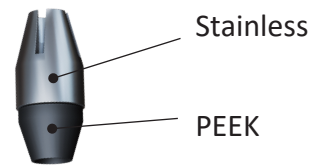
Introduction

This fittings offers several key features for UHPLC applications. Firstly, The ferrule is assembled from two components, one made of stainless steel and the other made of PEEK, allowing it to adapt to variations in the connection type of the LC column and avoid dead volume. It prevents tube twisting during assembly and ensures the ferrule does not become lodged inside the port. We offer two types of high-pressure fittings, a thumb-nut type and a hex-nut type.

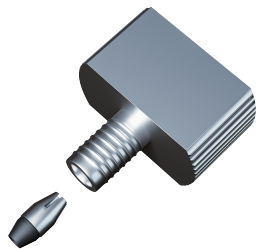
We offer two types of high-pressure fittings: a thumb-nut type with a maximum operating pressure of 50 MPa, and a hex-nut type with a maximum operating pressure of 140 MPa.



Two types of high-pressure fittings designed for UHPLC. The ferrule, which is assembled from two components and reusable.

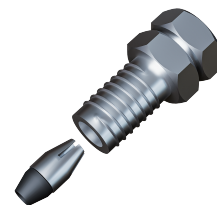


Thumb Nut



Maximum Pressure --- **50 MPa**
Connection ----- 10–32 taper for 1/16" OD
Materials ----- Stainless steel, PEEK

Hex Nut



Maximum Pressure --- **140 MPa**
Connection ----- 10–32 taper for 1/16" OD
Materials ----- Stainless steel, PEEK

Tightening Guideline

Sealing Torque	0.4 N·m	0.8 N·m	1.4 N·m
Pressure Rating	50 MPa (7,252 psi)	100 MPa (14,500 psi)	140 MPa (20,300 psi)

Ordering Information

Product	Qty	Cat.No.
Finger-Tight Fitting Set (Thumb Nut, Fitting Ferrule)	10 pairs	6010-77080
UHPLC Fitting Set (Hex Nut, Fitting Ferrule)	10 pairs	6010-77082
Fitting Ferrule	10 pcs	6010-77084

Note) In order to connect properly, it is necessary to insert the tube 25 mm or more into the fitting.

Contact us or your local GL Sciences representative.
<https://www.glsciences.com/contactus/>

Authorized distributor:
<https://www.glsciences.com/company/distributor.html>

For analytical use only. Information subject to change without prior notice.

