

 Solid phase extraction column

# InertSep HLB

# InertSep HLB FF



# InertSep HLB / InertSep HLB FF

InertSep HLB, InertSep HLB FF is a solid-phase extraction column that can effectively extract compounds with a wide range of physical properties from nonpolar to high polar.

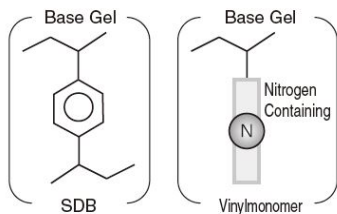
## Line-up

**InertSep HLB (particle size 30  $\mu\text{m}$ ) is designed for pretreatment of pharmaceutical analysis**

**A 96-well plate option is available for rapid processing of multiple samples**

**InertSep HLB FF (particle size 60  $\mu\text{m}$ ) is for applications and pretreatment of food analysis We offer a 20 mL reservoir that can dramatically improve the fluid permeability to help minimize clogging issues**

## Specifications

Structure of the gel	Physical properties	InertSep HLB	InertSep HLB FF
 <p>Base Gel</p> <p>SDB</p> <p>Vinylmonomer</p> <p>Nitrogen Containing</p>	Average particle diameter ( $\mu\text{m}$ )	30	60
<p><b>InertSep HLB is a composite polymer solid phase of N-containing vinyl polymer and styrene divinylbenzene. By optimizing the balance between hydrophobicity and hydrophilicity with our unique synthetic technology, we have made it possible to retain and elute a wide range of polar compounds.</b></p>	Surface area ( $\text{m}^2/\text{g}$ )	720	
	Pore volume ( mL/g)	1.3	
	Fine pore size (nm)	7	
	pH range of use	1-14	

## For pretreatment of clogging-prone samples

Clogging due to viscosity and residue can be a problem when handling food extractions. Our 20 mL InertSep HLB FF reservoir eliminates "clogging" problems that occur when using a 6 mL reservoir, Overall improving work efficiency.

6 mL Reservoir



20 mL Reservoir



Change reservoir size.  
(The packing amount remains the same.)

**Easy to operate**

**A Wide diameter allows solution to be added with ease.**

**Large volume capacity**

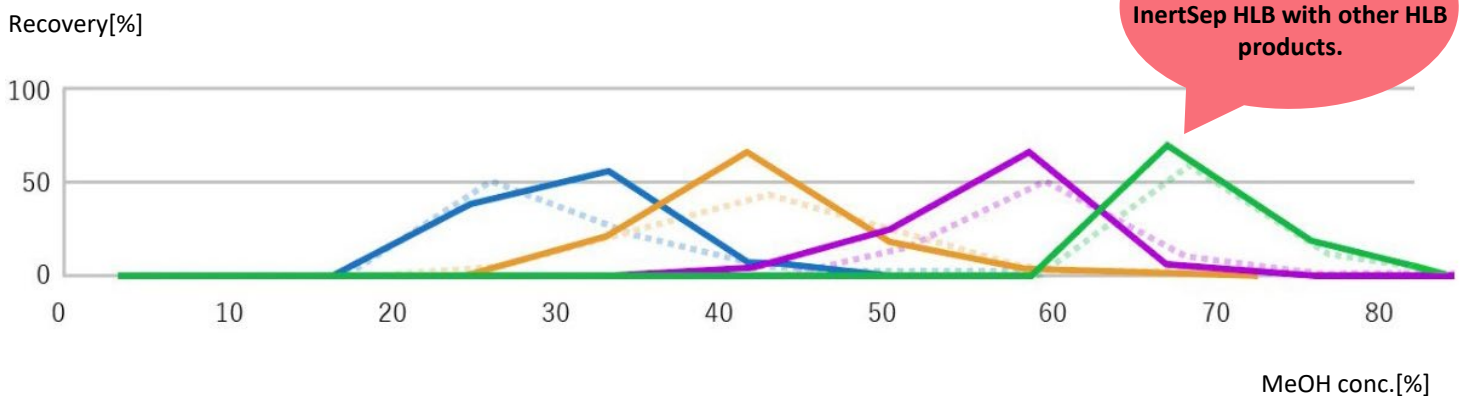
**Minimizes clogging**

Fluidity is improved and processing time is reduced.

## Comparison of retention against highly polar compounds

The strength of retention against highly polar compounds is very important for the analysis of pharmaceuticals and pharmaceutical metabolites. InertSep HLB exhibits the same retention behavior as other HLB solid phases and excellent retention for highly polar compounds that are difficult to retain. Similar results were obtained for retention behavior for acidic and basic compounds.

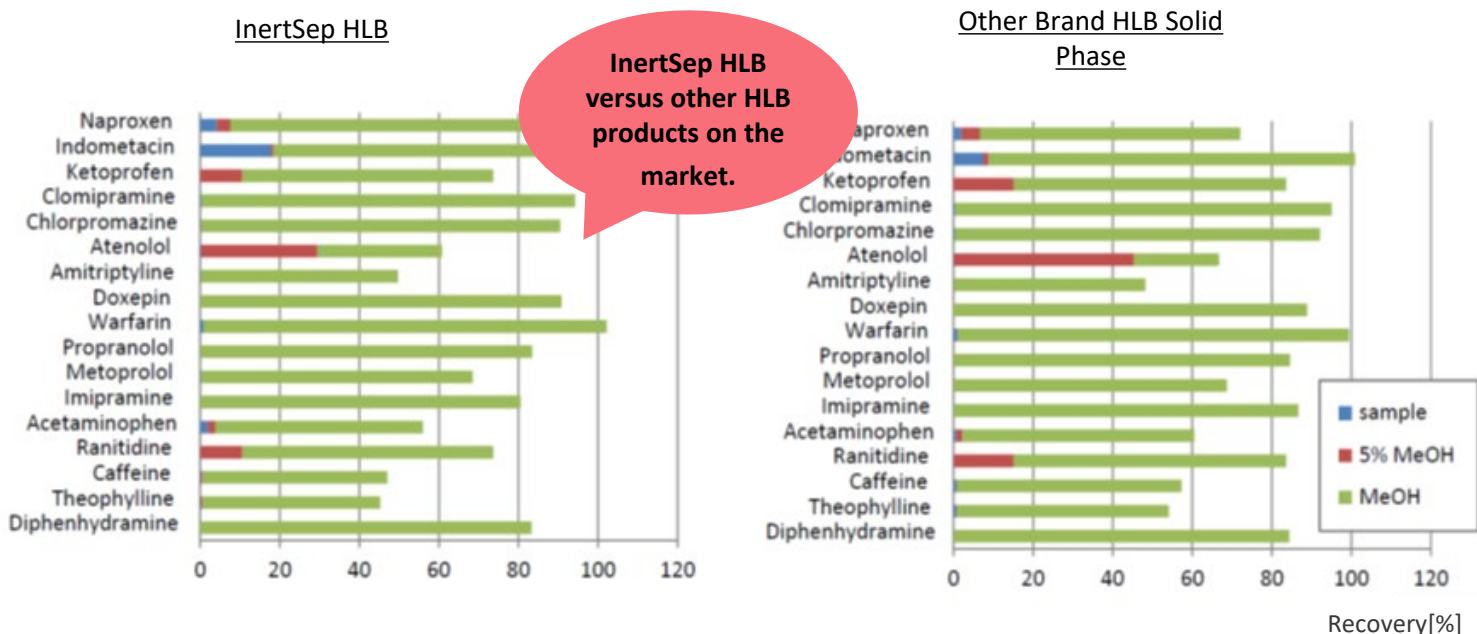
InertSep HLB      — Acetaminophen      — Caffeine      — Florfenicol      — Carbamazepine  
 Other Brand HLB      ··· Acetaminophen      ··· Caffeine      ··· Florfenicol      ··· Carbamazepine



## Comparison of retention of pharmaceutical ingredients in actual samples

Our InertSep HLB solid phase extraction columns are very robust under a variety of conditions.

InertSep HLB exhibits the same retention behavior of pharmaceutical components for serum samples as other HLB solid-phase columns on the market. With our InertSep HLB you can expect very stable results.



## Item List

Name	Column size	Quantity	Part number
InertSep HLB	10 mg/1 mL	100/PK	5010-27520
	30 mg/1 mL	100/PK	5010-27521
	60 mg/3 mL	50/PK	5010-27522
	200 mg/6 mL	30/PK	5010-27523
	500 mg/6 mL	30/PK	5010-27524
	96WP 10 mg	1 Each	5010-66440
	96WP 30 mg	1 Each	5010-66441
InertSep HLB FF	60 mg/3 mL	50/PK	5010-27532
	200 mg/6 mL	30/PK	5010-27533
	500 mg/6 mL	30/PK	5010-27534
	200 mg/20 mL	20/PK	5010-27535
	500 mg/20 mL	20/PK	5010-27536

※We also sell bulk material. For more information, please contact your sales representative

### **GL Sciences, Inc. Japan**

22-1 Nishishinjuku 6-chome  
Shinjuku, Tokyo, 163-1130, Japan  
Phone: +81-3-5323-6620  
Fax: +81-3-5323-6621  
www.glsciences.com  
email: [world@gl.co.jp](mailto:world@gl.co.jp)

### **GL Sciences B.V.**

De Sleutel 9  
5652 AS Eindhoven  
The Netherlands  
Tel:+31 (0)40 254 95 31  
<http://www.glsciences.eu/>  
e-mail:info@glscienc.es.eu

### **GL Sciences, Inc. USA**

4733 Torrance Blvd. Suite 255  
Torrance, Ca. 90503  
Phone: 310-265-4424  
Fax: 310-265-4425  
[www.glsiencesinc.com](http://www.glsiencesinc.com)  
email: info@glscienc.es.com

### **GL Sciences (ShangHai) Limited**

Tower B, Room 2003,  
Far East International Plaza,  
No.317 XianXia Road,  
ChangNing District,  
ShangHai, China 200032

### **International Distributors**

Visit our website at  
[www.glsciences.com/distributors](http://www.glsciences.com/distributors)

