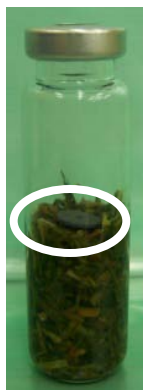
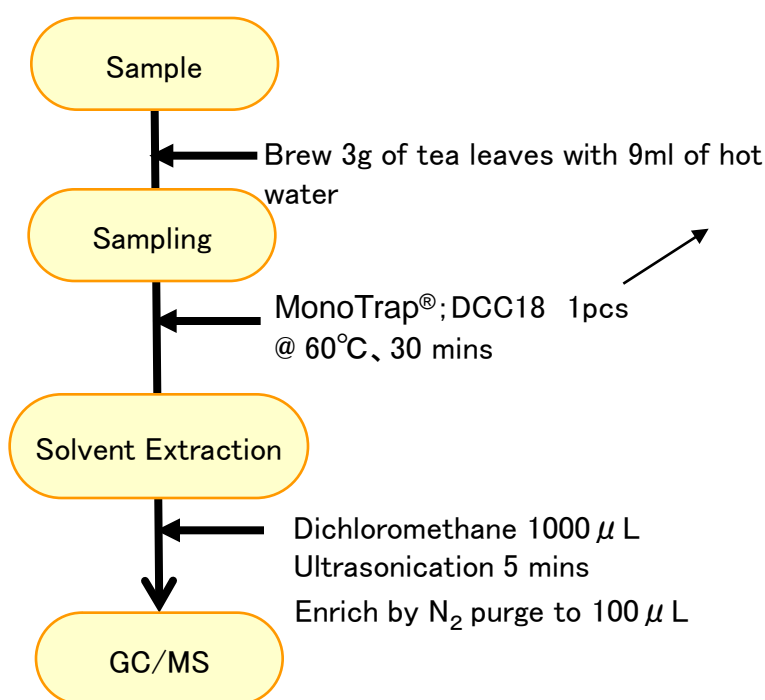


## Protocol



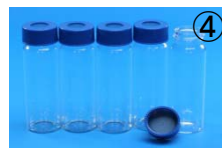
③ MT Extract Cup with Vial

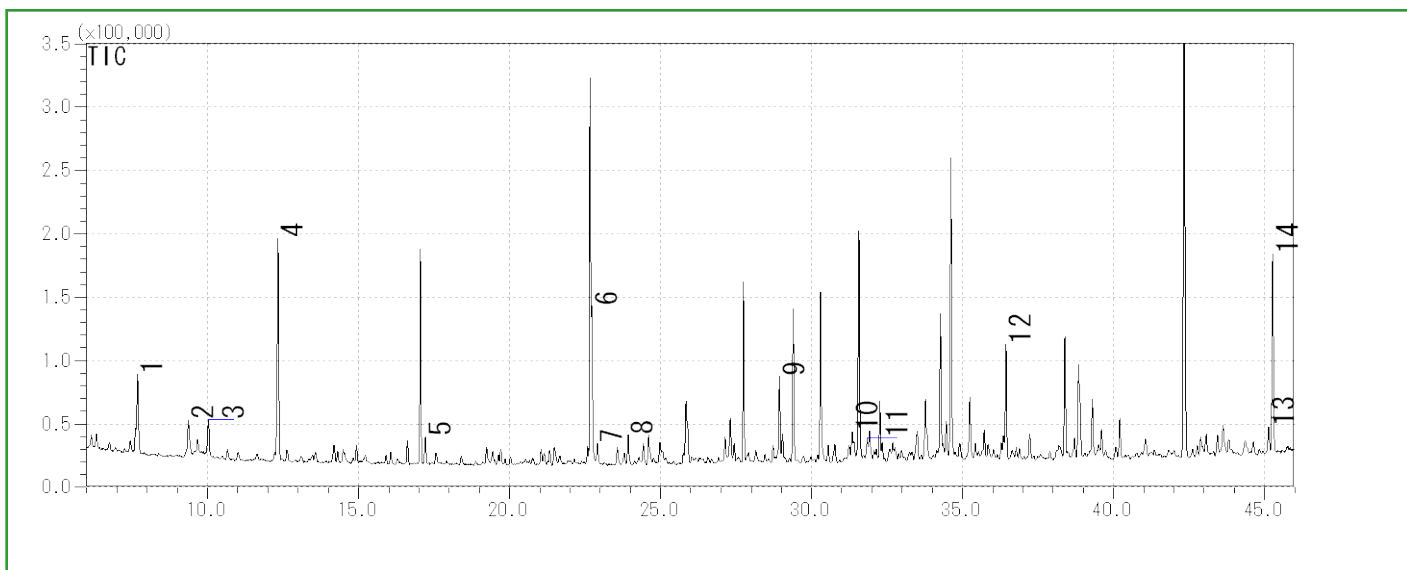
**GC Condition**

<b>System</b>	: SHIMADZU GC-2010, GCMS-QP2010Plus
<b>Column</b>	: InertCap Pure-WAX (Cat. 1010-68142) 0.25mm I.D. × 30m df=0.25 $\mu$ m
<b>Column Temp</b>	: 40°C(5min) → 4°C/min → 250°C
<b>Carrier Gas</b>	: He 120kPa
<b>Injection</b>	: Splitless, 1 $\mu$ L 250°C
<b>Detection</b>	: MS Scan (m/z; 40-350)

MonoTrap<sup>®</sup> Convenient MonoTrap<sup>®</sup> Start-UP-KIT

	Description	Qty
①	MT Holder	5
②	MT Stand	1
③	MT Extract Cup with Vial(20ml)	5
④	Clean Pin Hole Septum with vial(40ml)	5
⑤	200 $\mu$ L Glass Insert (Flat Bottom)	40
⑥	MonoTrap <sup>®</sup> DCC18	20
⑦	MonoTrap <sup>®</sup> RCC18	20
⑧	MonoTrap <sup>®</sup> DSC18	20
⑨	MonoTrap <sup>®</sup> RSC18	20





- |   |                          |    |                                   |
|---|--------------------------|----|-----------------------------------|
| 1 | Isobutenyl methyl ketone | 8  | 1-Ethyl-1H-pyrrole-2-carbaldehyde |
| 2 | 3-Penten-2-ol            | 9  | Epoxy linalol                     |
| 3 | <b>D-Limonene</b>        | 10 | <b>trans-Geraniol</b>             |
| 4 | 1-Pentanol               | 11 | <b>Benzyl alcohol</b>             |
| 5 | Nonanal                  | 12 | <b>trans-Nerolidol</b>            |
| 6 | Dimethyl sulfoxide       | 13 | Coumarine                         |
| 7 | 1-Octanol                | 14 | Indole                            |

Red...[Food] Fragrance Encyclopedia by Japan Perfumery & Flavoring Association

Ultra inert WAX column **InertCap Pure-WAX** is highly recommended to analyze aromatic compounds together with **MonoTrap®**

<http://www.gls.co.jp/gc.html>