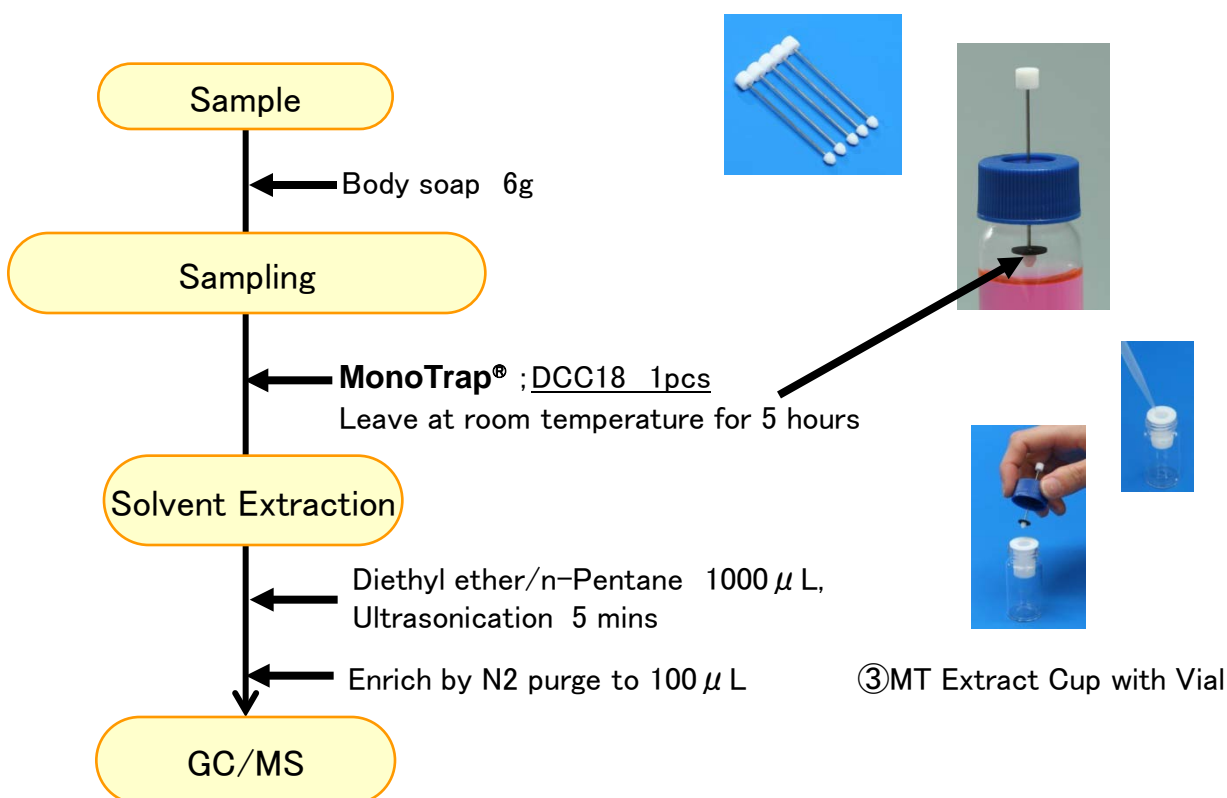
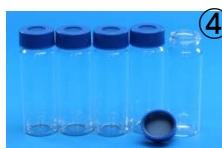
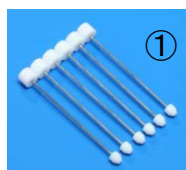
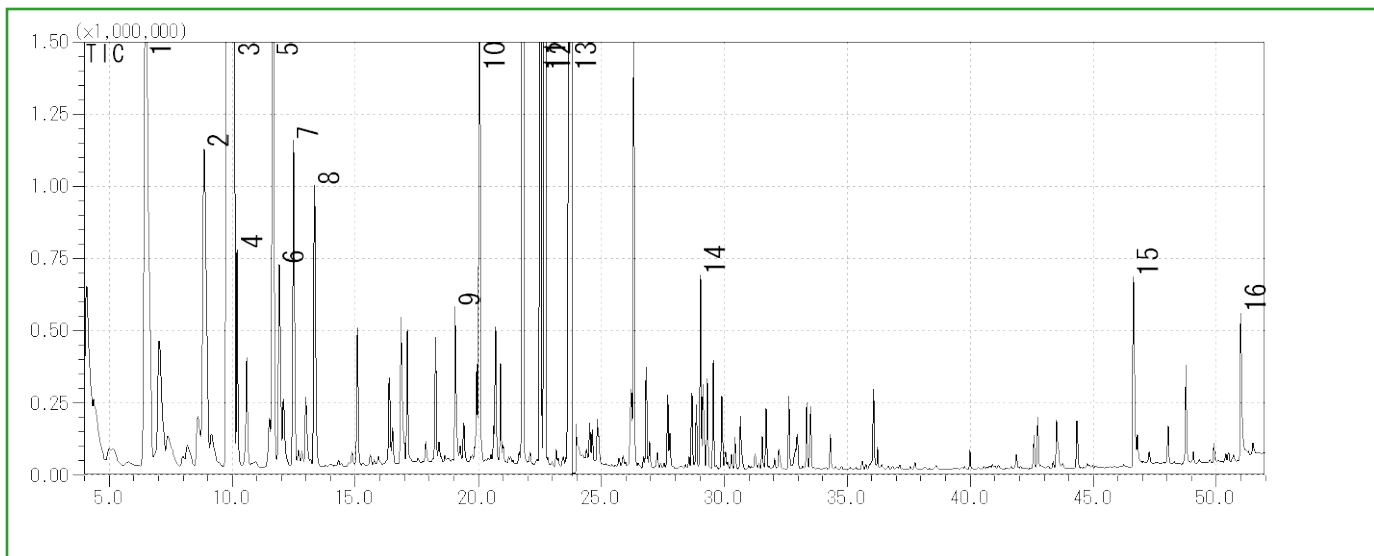


Protocol

**GC Condition****System** : SHIMADZU GC-2010, GCMS-QP2010Plus**Column** : **InertCap Pure-WAX**(Cat.1010-68142)
0.25mmI.D. \times 30m df=0.25 μ m**Column Temp** : 40°C (5min) \rightarrow 4°C/min \rightarrow 250°C (5min)**Carrier Gas** : He 120kPa**Injection** : Splitless, 1 μ L**Detection** : MS Scan (m/z;40-350)Ultra inert WAX column **InertCap Pure-WAX** is highly recommended to analyze aromatic compounds together with **MonoTrap®****MonoTrap® Convenient MonoTrap® Start-UP-KIT**

	Description	Qty
①	MT Holder	5
②	MT Stand	1
③	MT Extract Cup with Vial(20ml)	5
④	Clean Pin Hole Septum with vial(40ml)	5
⑤	200 μ L Glass Insert (Flat Bottom)	40
⑥	MonoTrap® DCC18	20
⑦	MonoTrap® RCC18	20
⑧	MonoTrap® DSC18	20
⑨	MonoTrap® RSC18	20





- | | | | |
|---|--------------------|----|--------------------------------|
| 1 | β -Pinene | 9 | Acetic acid |
| 2 | β -Myrcene | 10 | Dihydromyrcenol |
| 3 | D-Limonene | 11 | β -Linalool |
| 4 | Sabinen | 12 | 4-tert-Butylcyclohexyl acetate |
| 5 | γ -Terpinen | 13 | Propylene Glycol |
| 6 | Styrene | 14 | β -Citronellol |
| 7 | p-Cymene | 15 | Dodecanoic acid |
| 8 | Octanal | 16 | Tetradecanoic acid |

<http://www.gls.co.jp/gc.html>