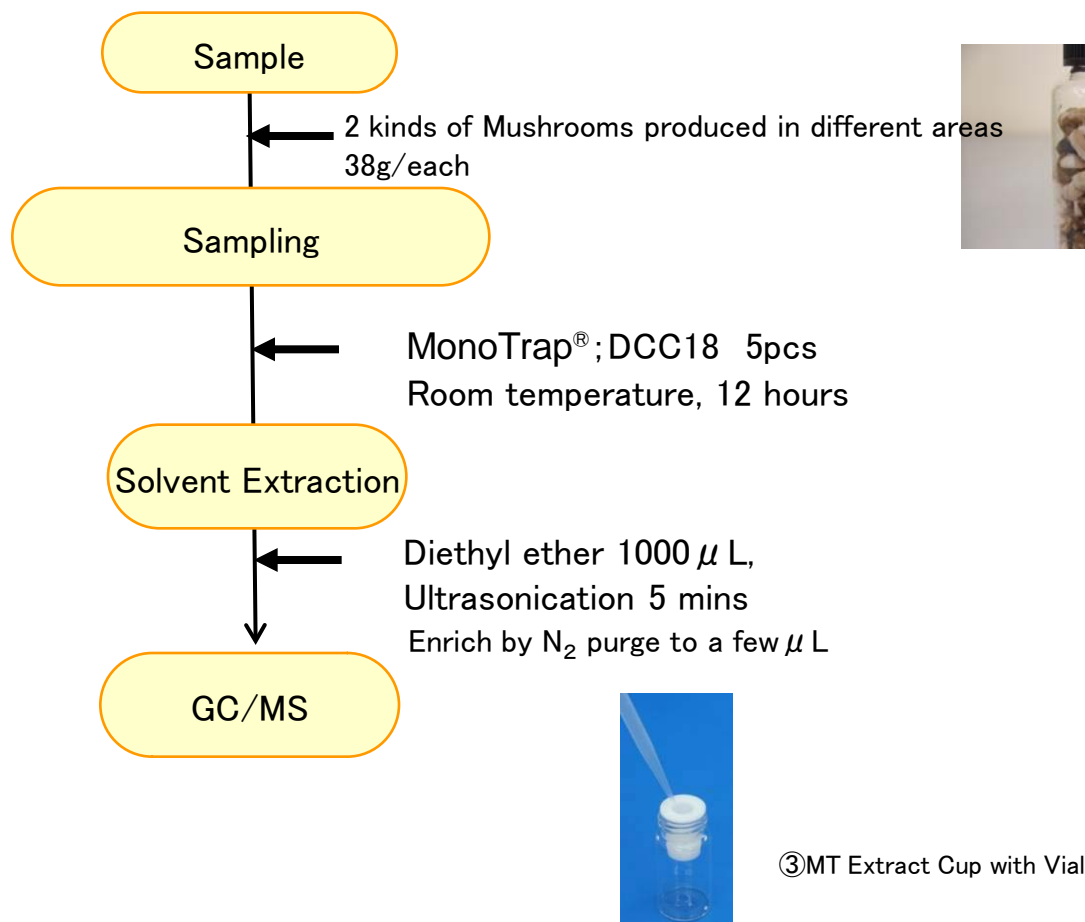


Protocol

GC Condition

System : SHIMADZU GC-2010, GCMS-QP2010

Column : InertCap Pure-WAX
0.25mm I.D. \times 30m df=0.25 μ m

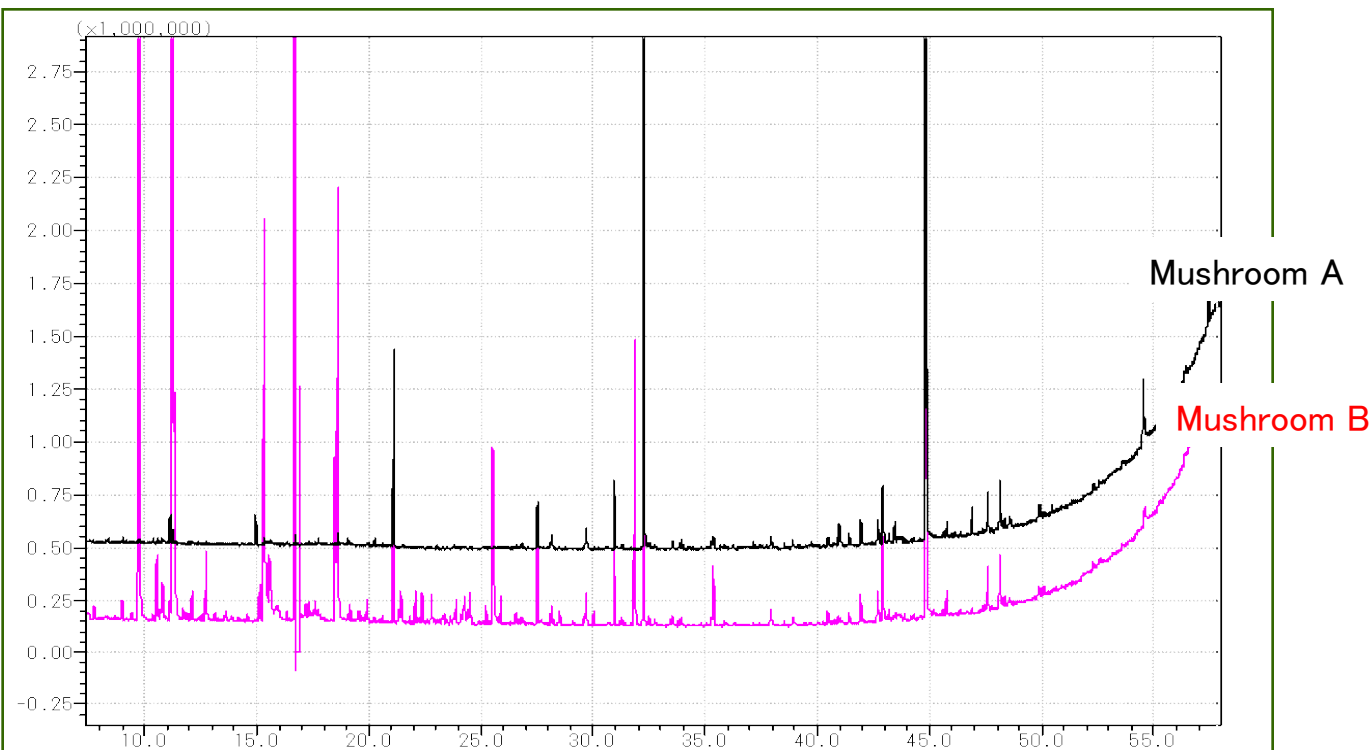
Column Temp : 40°C(5min) \rightarrow 4°C/min \rightarrow 250°C(5min)

GC Capillary Column: **InertCap Pure-WAX** 0.25mm I.D. \times 30m df=0.25 μ m Cat.1010-68142

Carrier Gas : He 95kPa

Injection : Split 1:10, 1 μ L
250°C

Detection : MS Scan (m/z; 25-450)



< Comparison of Fragrances by Area % >

	Mushroom A	Mushroom B
1-Octen-3-ol	2.3%	4.5%
3-Octanol	1.7%	33.1%
3-Octanone	1.8%	35.8%
Dimethyl tris μ Lfide	1.7%	4.5%

Ref) [Food] Fragrance Encyclopedia by Japan Perfumery & Flavoring Association

Fresh mushroom contained more water while the dried one had stronger fragrance. These differences can be observed by GC/MS using MonoTrap®

<http://www.gls.co.jp/gc.html>