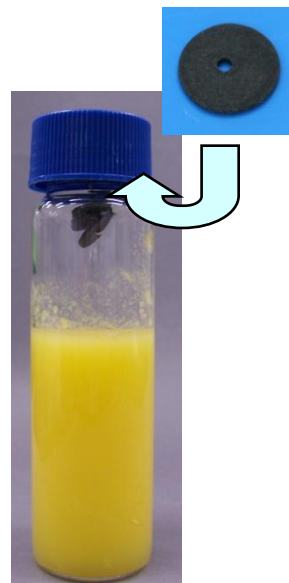
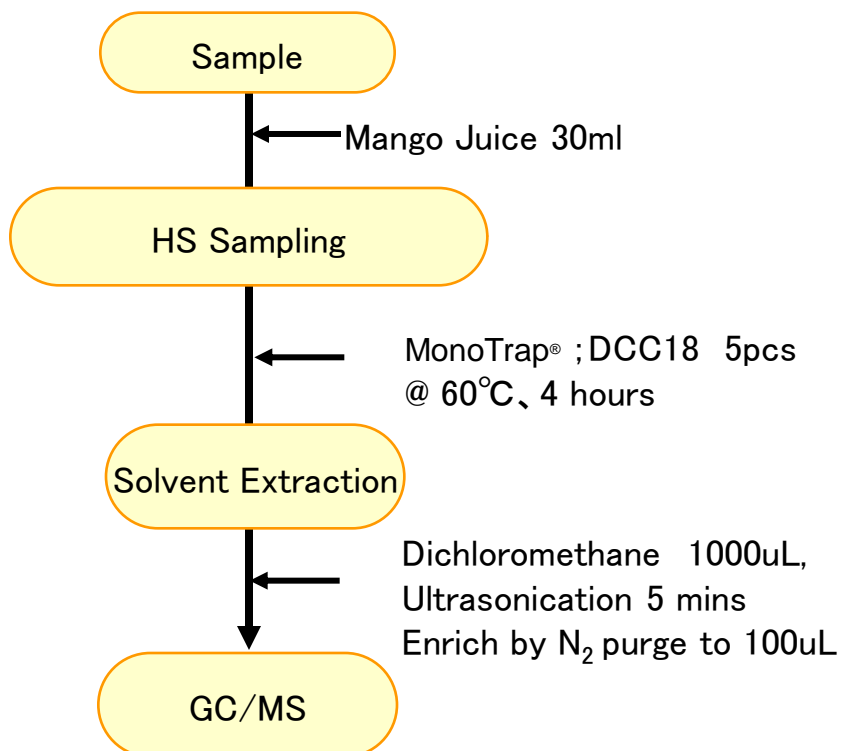


5 Easy HS Enrichment of Mango Juice with MonoTrap®

GL Sciences Inc.

Protocol



GC Condition

System : SHIMADZU GC-2010, GCMS-QP2010

Column : **InertCap Pure-WAX** (Cat.1010-68142)
0.25mm I.D. × 30m df=0.25μ m

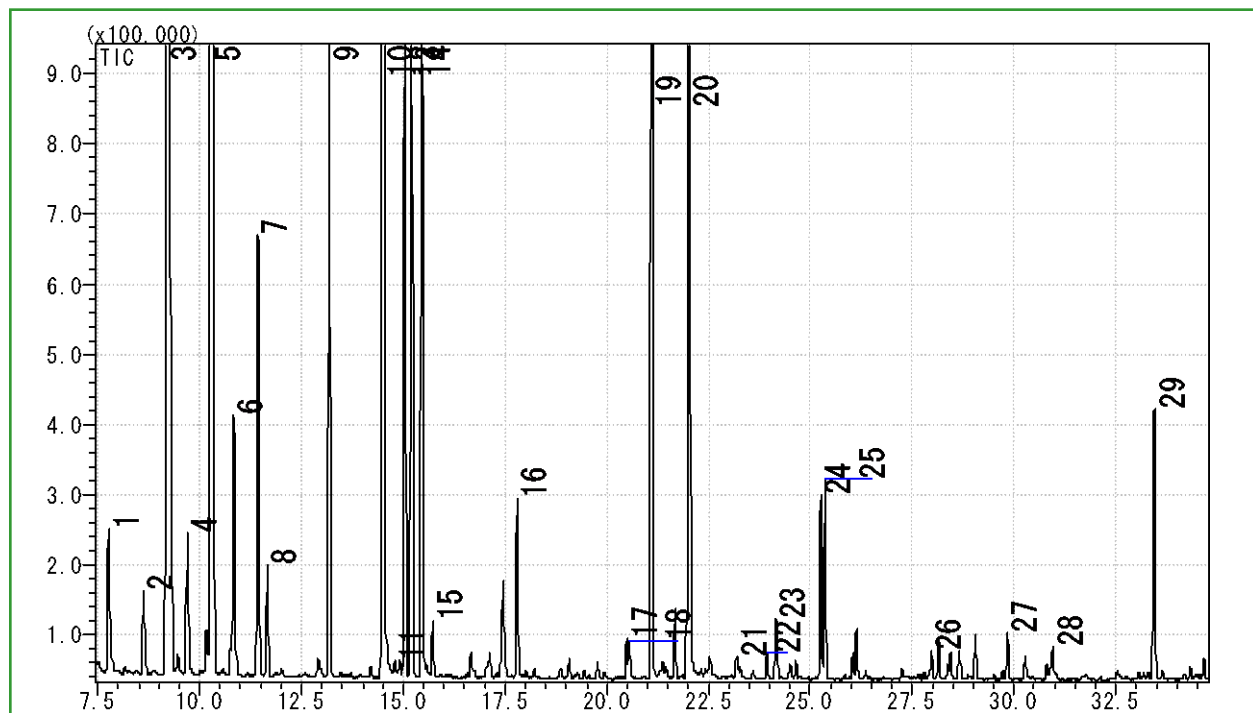
Column Temp : 40°C (5min) → 4°C/min → 250°C (5min)

Carrier Gas : He 120kPa

Injection : Split / Splitless, 1uL
250°C

Detection : MS Scan (m/z; 40-450)

Ultra inert WAX column **InertCap Pure-WAX** is highly recommended to analyze aromatic compounds together with **MonoTrap®**



- | | | | |
|----|------------------------|----|--------------------------------|
| 1 | β -Myrcene | 16 | Furfural |
| 2 | D-Limonene | 17 | 2,3-Butanediol |
| 3 | Isopentyl alcohol | 18 | Dimethyl Sulfoxide |
| 4 | n-Butyl butanoate | 19 | β -Linalool |
| 5 | β -trans-Ocimene | 20 | Propylene Glycol |
| 6 | β -cis-Ocimene | 21 | Butanoic acid |
| 7 | Isoamyl butanoate | 22 | Ethyl butanoate |
| 8 | n-Hexyl acetate | 23 | α -Caryophyllene |
| 9 | cis-3-Hexenyl Acetate | 24 | α -Terpieol |
| 10 | 1-Hexanol | 25 | α -Methylbenzyl acetate |
| 11 | 3-Hexen-1-ol | 26 | 2-Methyl-3-buten-2-ol |
| 12 | Allo-Ocimene | 27 | Ethyl decanoate |
| 13 | 2-Propenyl hexanoate | 28 | Phenylethyl Alcohol |
| 14 | cis-3-Hexen-1-ol | 29 | Diphenyl ether |
| 15 | Allo-Ocimene | | |

Red...[Food] Fragrance Encyclopedia by Japan Perfumery & Flavoring Association