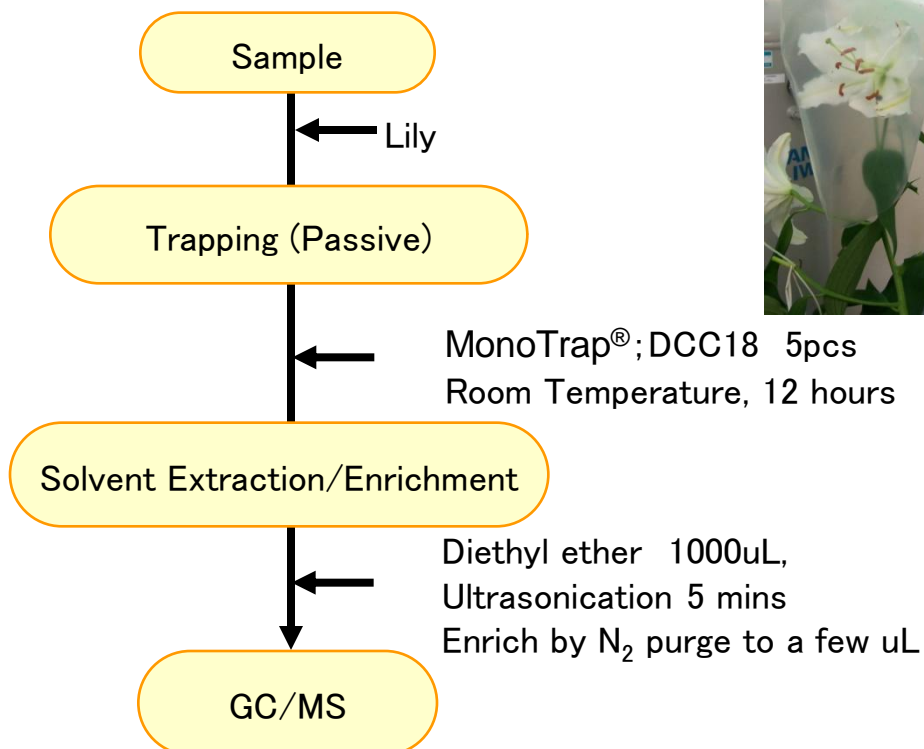


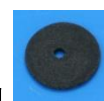
Protocol



③ MT Extract Cup with Vial
(Start UP-Kit)

MonoTrap® Series

cat.No	Description	Shape	Size	Active Carbon	Functional Group
1050-72101	MonoTrap DCC18	Disk	O.D.10mmx thick 1mm	Yes	C18
1050-72201	MonoTrap RCC18	Rod	5mm	Yes	C18
1050-71101	MonoTrap DSC18	Disk	O.D.10mmx thick 1mm	No	
1050-71201	MonoTrap RSC18	Rod	5mm	No	C18



DCC18



RCC18



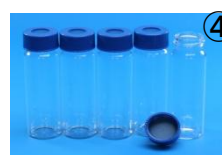
DSC18

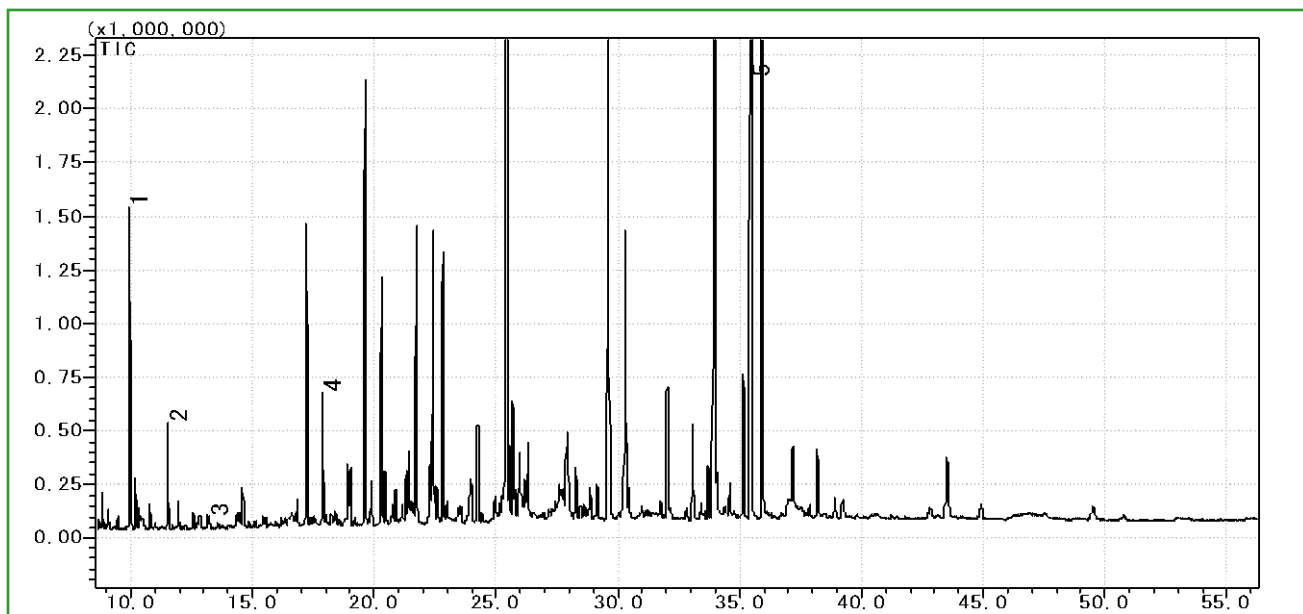


RSC18

MonoTrap® Convenient MonoTrap® Start-UP-KIT

	Description	Qty
①	MT Holder	5
②	MT Stand	1
③	MT Extract Cup with Vial(20ml)	5
④	Clean Pin Hole Septum with vial(40ml)	5
⑤	200µ L Glass Insert (Flat Bottom)	40
⑥	MonoTrap® DCC18	20
⑦	MonoTrap® RCC18	20
⑧	MonoTrap® DSC18	20
⑨	MonoTrap® RSC18	20





GC Condition

System : SHIMADZU GC-2010, GCMS-QP2010

Column : **InertCap Pure-WAX**(Cat.1010-68142)
0.25mmI.D. × 30m df=0.25μ m

Column Temp : 70°C→4°C/min→220°C (30min)

Carrier Gas : He 90kPa

Injection : Split 1:10 ,1uL
250°C

Detection : MS Scan (m/z;50-450)

- 1 β-Linalool
- 2 Clorius
- 3 β-Farnesene
- 4 trans-Geraniol
- 5 Benzyl Benzoate

※ Identification result of standards

Ultra inert WAX column **InertCap Pure-WAX** is highly recommended to analyze aromatic compounds together with **MonoTrap®**