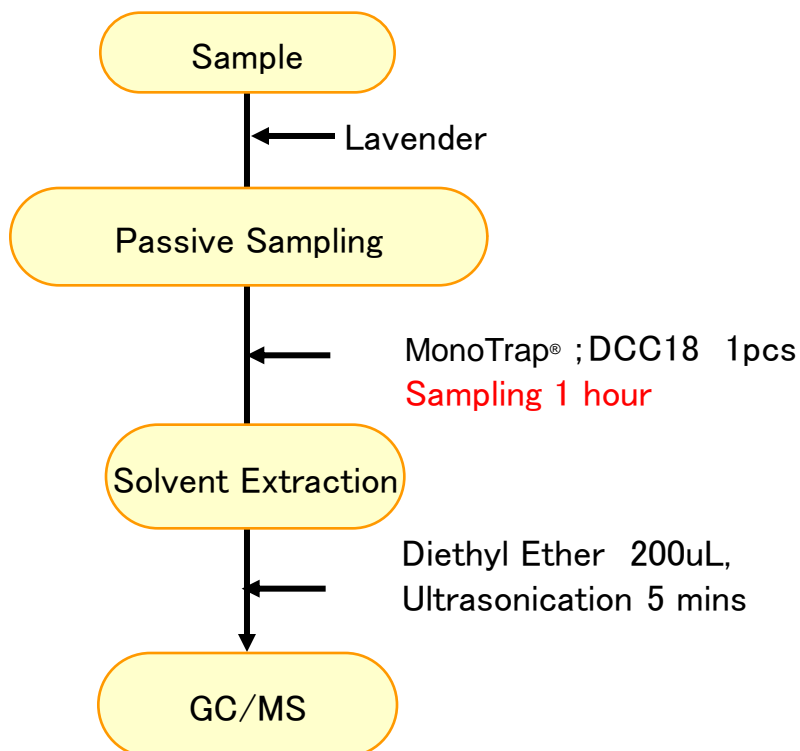


Quick Passive Sampling of Lavender Fragrance with MonoTrap®

Protocol



③MT Extract Cup with Vial
(Start UP-Kit)

GC Condition

System : SHIMADZU GC-2010, GCMS-QP2010

Column : **InertCap Pure-WAX**(Cat.1010-68142)

0.25mm I.D. × 30m df=0.25μ m

Column Temp : 70°C → 4°C/min → 220°C

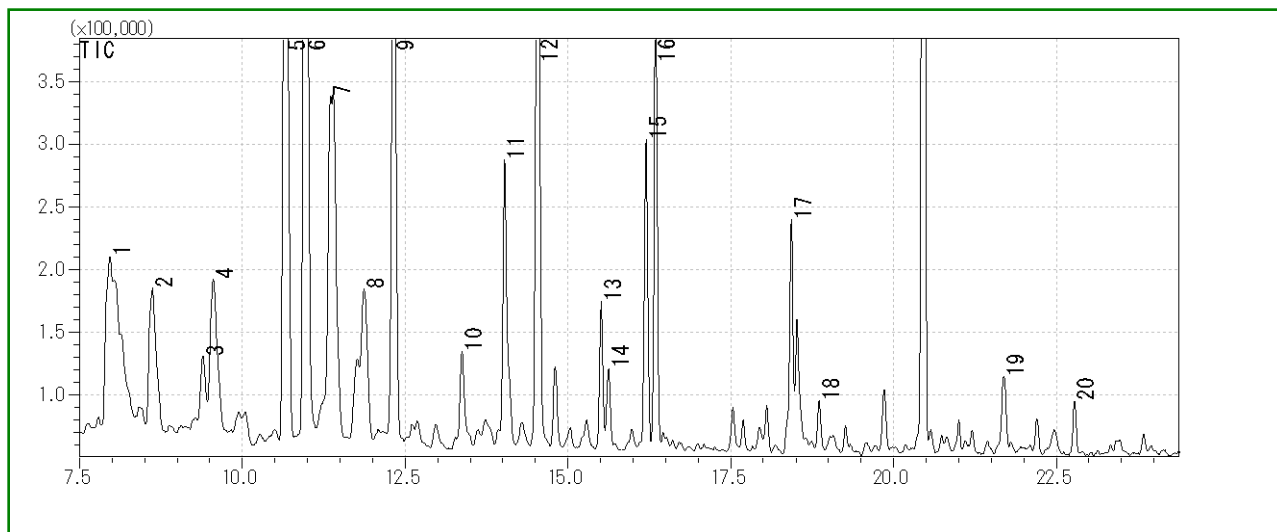
Carrier Gas : He 75kPa

Injection : Split / Splitless, 1μL

250°C

Detection : MS Scan (m/z; 35-450)

Ultra inert WAX column **InertCap Pure-WAX** is highly recommended to analyze aromatic compounds together with **MonoTrap®**



- | | | | |
|----|------------------------------------------------------------------|----|---------------------|
| 1 | α -Methyl- α -[4-methyl-3-pentenyl]oxiranemethanol | 11 | β -Farnesene |
| 2 | Linalool oxide trans | 12 | Borneol |
| 3 | Decanal | 13 | Nerol acetate |
| 4 | Alcanfor | 14 | Epoxy linalol |
| 5 | β -Linalool | 15 | γ -Cadinene |
| 6 | Linalool acetate | 16 | Geraniol acetate |
| 7 | α -Santalene | 17 | p-Cymen-8-ol |
| 8 | Caryophyllene | 18 | Geranyl Acetone |
| 9 | 2-Isopropenyl-5-methyl-4-hexenyl acetate | 19 | Caryophyllene oxide |
| 10 | Teresantalol | 20 | Teresantalol |

MonoTrap® Convenient MonoTrap® Start-UP-KIT

	Description	Qty
①	MT Holder	5
②	MT Stand	1
③	MT Extract Cup with Vial(20ml)	5
④	Clean Pin Hole Septum with vial(40ml)	5
⑤	200 μ L Glass Insert (Flat Bottom)	40
⑥	MonoTrap® DCC18	20
⑦	MonoTrap® RCC18	20
⑧	MonoTrap® DSC18	20
⑨	MonoTrap® RSC18	20

