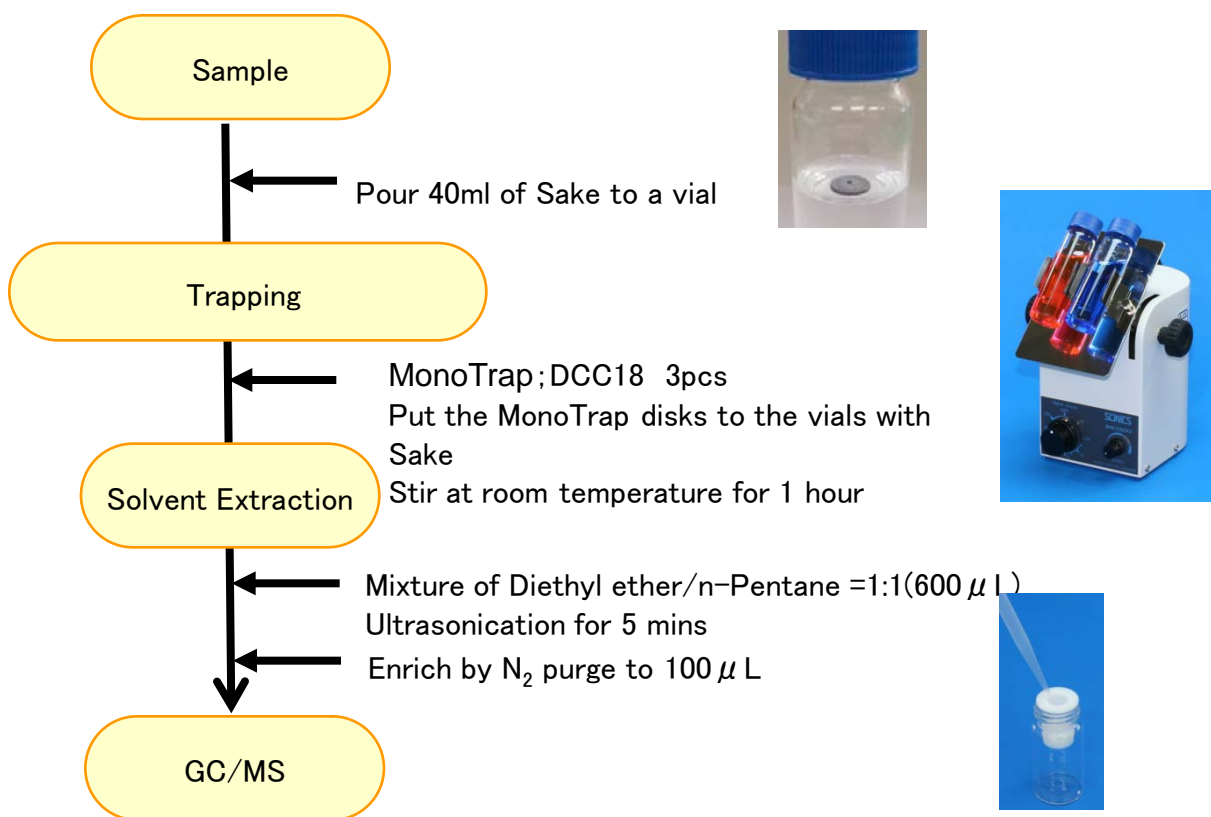


Easy Enrichment of Japanese Rice Wine (Sake) Fragrance with MonoTrap[®]

Protocol



GC Condition

System : SHIMADZU GC-2010、GCMS-QP2010

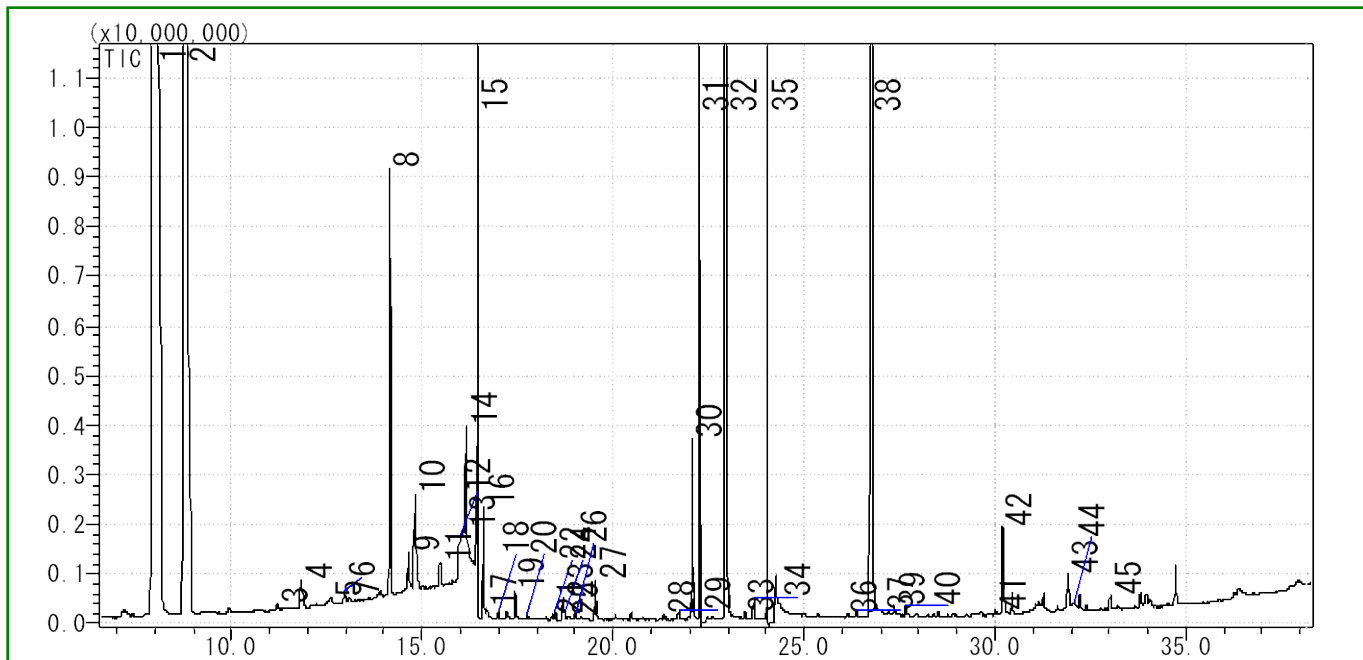
Column : InertCap Pure-WAX Cat.1010-68142
0.25mmI.D. × 30m df=0.25 μ m

Column Temp : 50°C (5min) → 6°C/min → 250°C (5min)

Carrier Gas : He 90kPa

Injection : Splitless, 1 μ L
250°C

Detection : MS Scan (m/z;35-450)



- | | |
|---------------------------------------|---------------------------------------|
| 1 Isopentyl alcohol | 23 Hexanoic acid |
| 2 Ethyl caproate | 24 Ethyl decanoate |
| 3 2-Heptanol | 25 Benzeneacetaldehyde |
| 4 Ethyl lactate | 26 2-Propenoic acid |
| 5 3-Ethoxy-1-propanol | 27 Diethyl succinate |
| 6 2-Nonanone | 28 β -Citronellol |
| 7 Nonanal | 29 Benzeneacetic acid ethyl ester |
| 8 Ethyl octanoate | 30 3-Hydroxybutanoic acid ethyl ester |
| 9 1-Heptanol | 31 β -Phenethyl acetate |
| 10 Acetic acid +Furfural | 32 Hexanoic acid |
| 11 2-Ethyl-1-hexanol | 33 Benzyl Alcohol |
| 12 Ethyl Acetate | 34 Ethyl 3-hydroxytridecanoate |
| 13 Ethyl-3-hydroxybutyrate | 35 Phenylethyl Alcohol |
| 14 Benzaldehyde | 36 4-Oxononanal |
| 15 3-Methoxy-1,2-propanediol | 37 Isopentyl hexanoate |
| 16 2,3-Butanediol | 38 Octanoic Acid |
| 17 Ethyl 2-hydroxy-4-methylpentanoate | 39 Ethyl 3-hydroxytridecanoate |
| 18 1-Octanol | 40 Tributyl phosphate |
| 19 2,3-Butanediol | 41 α -Methylbenzeneethanamine |
| 20 Propylene Glycol | 42 n-Decanoic acid |
| 21 2-Ethyl-1,3-dioxolane | 43 4-Ethoxy-4-oxobutanoic acid |
| 22 Butyrolactone | 44 Coumaran |
| | 45 1-Methyldecylamine |