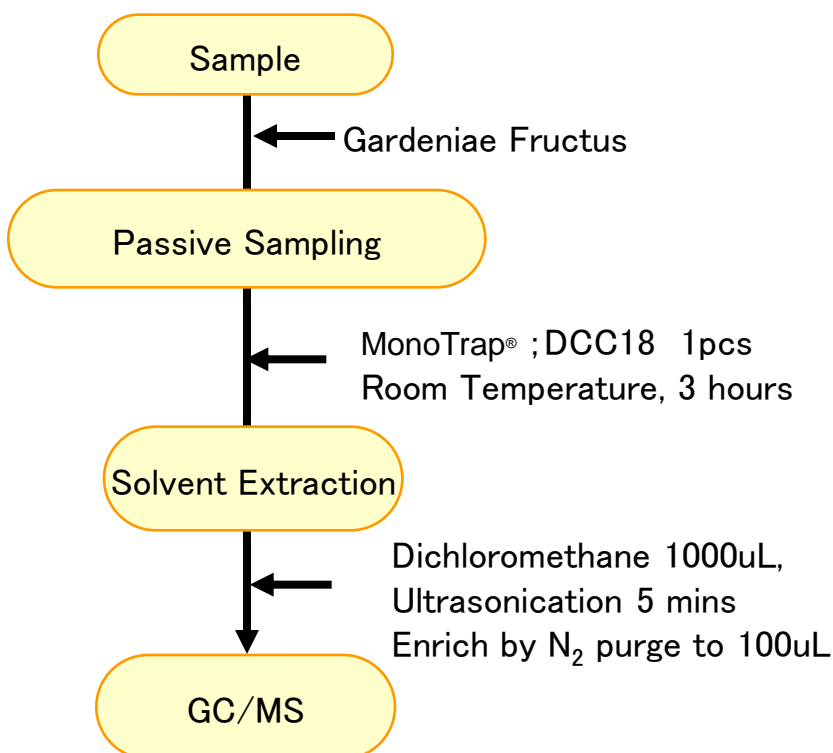


# 3 Easy Enrichment of Gardeniae Fructus by Passive Sampling with MonoTrap®

GL Sciences Inc.

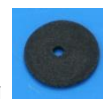
## Protocol



③ MT Extract Cup with Vial  
(Start UP-Kit)

## MonoTrap® Series

cat.No	Description	Shape	Size	Active Carbon	Functional Group
1050-72101	MonoTrap DCC18	Disk	O.D.10mmx thick 1mm	Yes	C18
1050-72201	MonoTrap RCC18	Rod	5mm	Yes	C18
1050-71101	MonoTrap DSC18	Disk	O.D.10mmx thick 1mm	No	
1050-71201	MonoTrap RSC18	Rod	5mm	No	C18



DCC18



RCC18



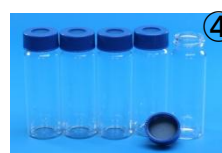
DSC18

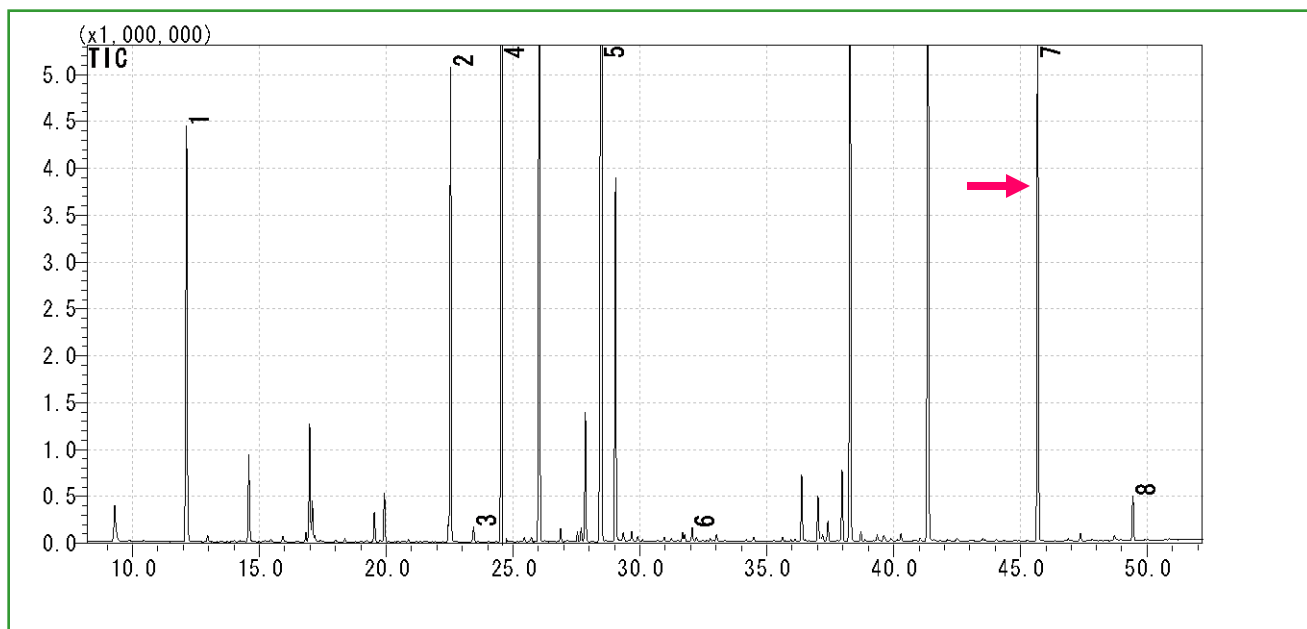


RSC18

## MonoTrap® Convenient MonoTrap® Start-UP-KIT

	Description	Qty
①	MT Holder	5
②	MT Stand	1
③	MT Extract Cup with Vial(20ml)	5
④	Clean Pin Hole Septum with vial(40ml)	5
⑤	200µ L Glass Insert (Flat Bottom)	40
⑥	MonoTrap® DCC18	20
⑦	MonoTrap® RCC18	20
⑧	MonoTrap® DSC18	20
⑨	MonoTrap® RSC18	20





- |   |                            |   |                     |
|---|----------------------------|---|---------------------|
| 1 | $\beta$ -cis-Ocimene       | 5 | $\alpha$ -Farnesene |
| 2 | $\beta$ -Linalool          | 6 | Benzyl Alcohol      |
| 3 | Caryophyllene              | 7 | <b>Indole</b>       |
| 4 | Benzoic acid, methyl ester | 8 | Benzyl Benzoate     |

**GC Condition**

※ Identification result of standards

**System** : SHIMADZU GC-2010、GCMS-QP2010

**Column** : **InertCap Pure-WAX**(Cat.1010-68142)  
0.25mm I.D. × 30m df=0.25 $\mu$  m

**Column Temp** : 40°C (5min) → 4°C/min → 250°C (5min)

**Carrier Gas** : He 120kPa

**Injection** : Split/Split Less 0.5min, 1 $\mu$ L  
250°C

**Detection** : MS Scan (m/z; 40-350)

Ultra inert WAX column **InertCap Pure-WAX** is highly recommended to analyze aromatic compounds together with **MonoTrap®**