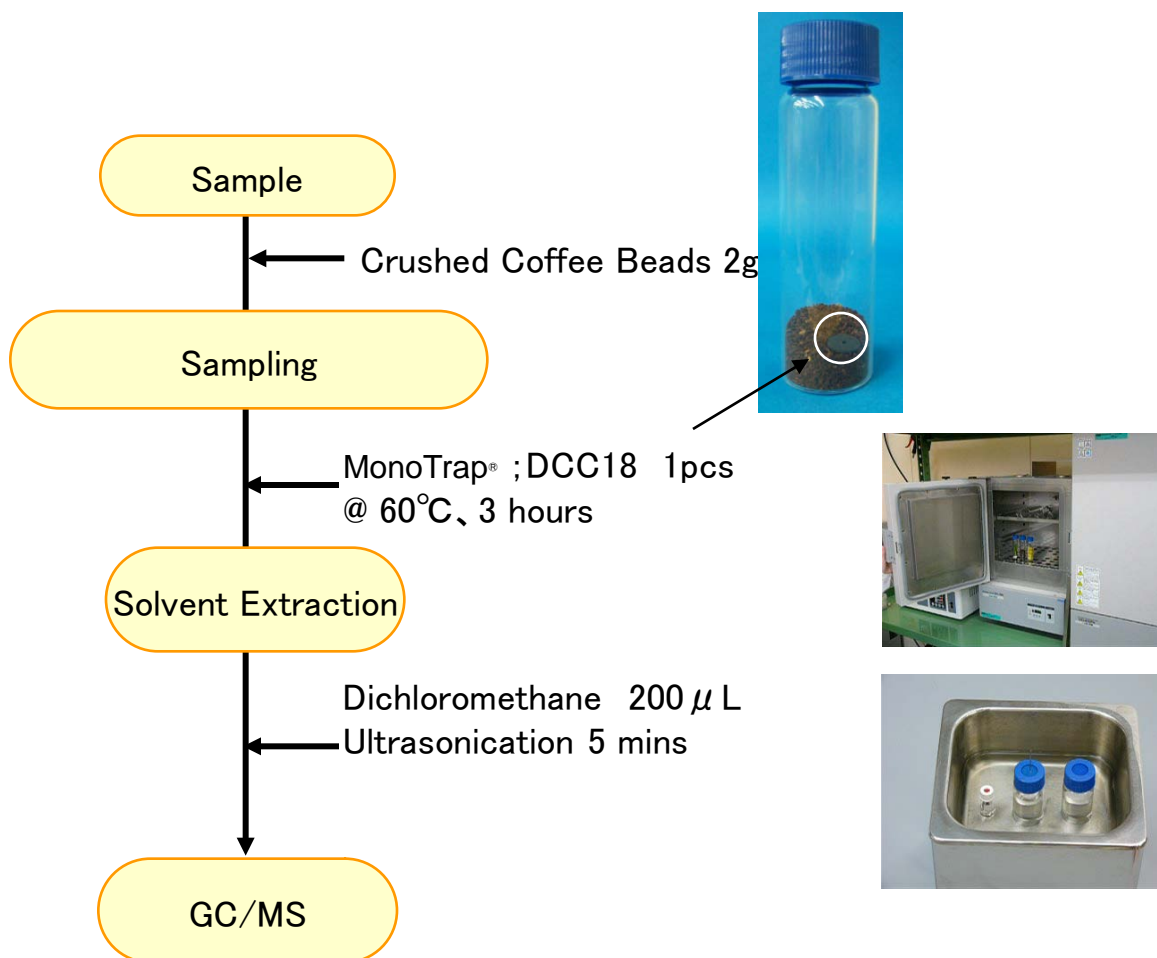


Easy Enrichment of Coffee Fragrance Compounds with MonoTrap®

Protocol



GC Condition

System : SHIMADZU GC-2010, GCMS-QP2010 Plus

Column : InertCap Pure-WAX
0.25mm I.D. \times 30m df=0.25 μ m

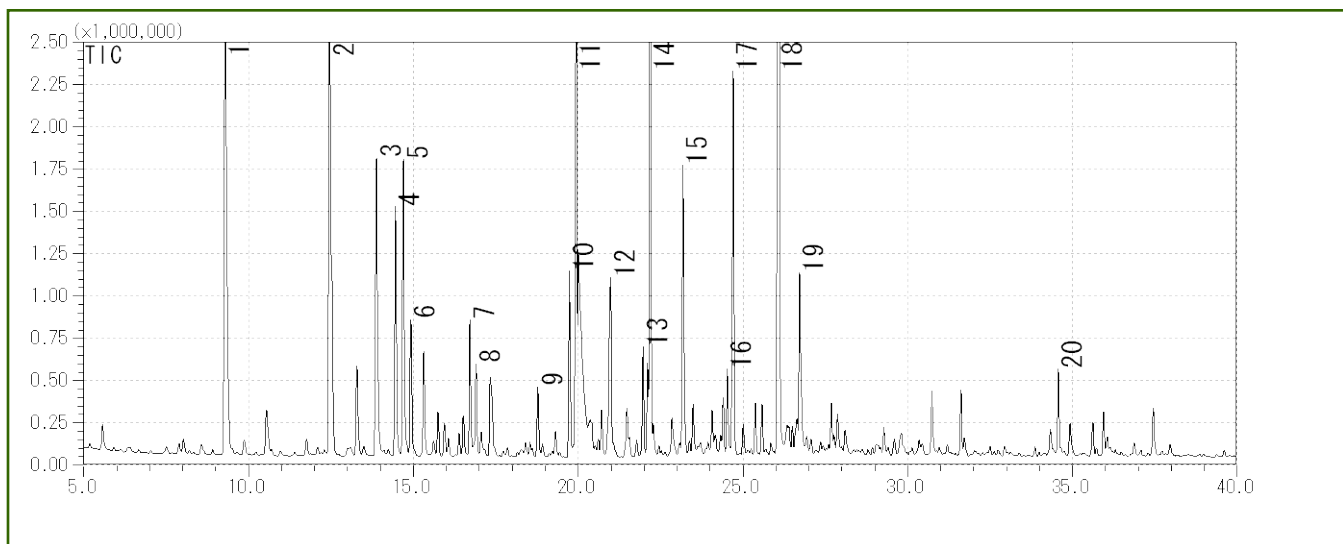
Column Temp : 40°C(5min) \rightarrow 4°C/min \rightarrow 250°C (5min)

GC Capillary Column : **InertCap Pure-WAX** 0.25mm I.D. \times 30m df=0.25 μ m Cat.1010-68142

Carrier Gas : He 120kPa

Injection : Splitless, 1 μ L
250°C

Detection : MS Scan (m/z;30-350)



- | | | | |
|----|------------------------------|----|--------------------------|
| 1 | Pyridine | 11 | Acetol acetate |
| 2 | Methylpyrazine | 12 | Methyl 2-furyl ketone |
| 3 | Acetol | 13 | Vinyl propionate |
| 4 | 2,5-Dimethylpyrazine | 14 | Furfuryl acetate |
| 5 | 2,6-Dimethylpyrazine | 15 | 2-Formyl-5-methylfuran |
| 6 | 2-Ethylpyrazine | 16 | 2-Formyl-1-methylpyrrole |
| 7 | 2-Ethyl-6-methylpyrazine | 17 | Butyrolactone |
| 8 | 2-Ethyl-5-methylpyrazine | 18 | 2-Furanmethanol |
| 9 | 2-Ethyl-3,6-dimethylpyrazine | 19 | Isovaleric acid |
| 10 | Furfural | 20 | 2-Acetylpyrrole |

Ultra inert WAX column **InertCap Pure-WAX** is highly recommended to analyze aromatic compounds together with **MonoTrap®**

<http://www.gls.co.jp/gc.html>