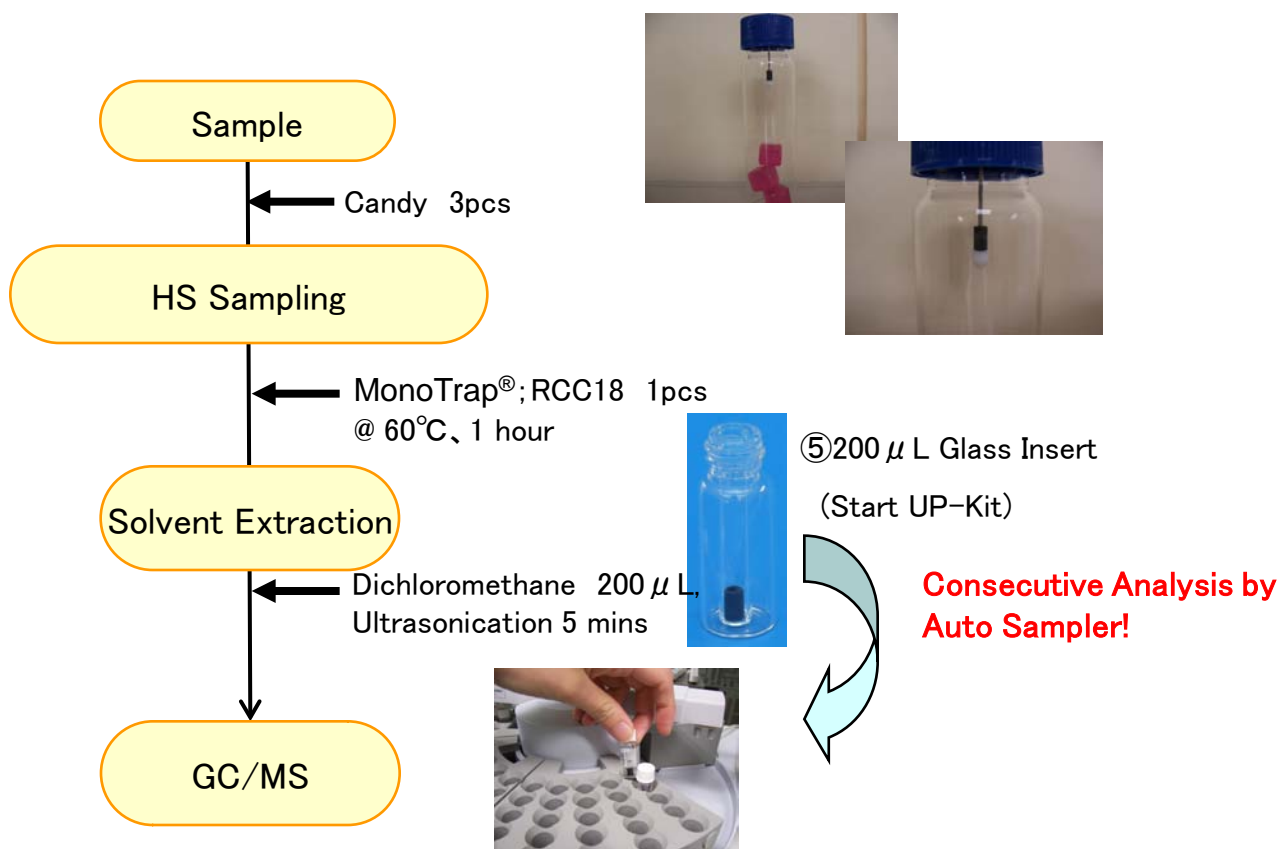


Protocol



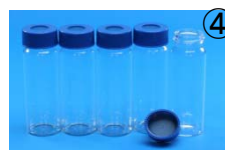
RCC18 and RSC18 can be used with existing auto sampler inert vials to elute without using the MT Extract Cup.

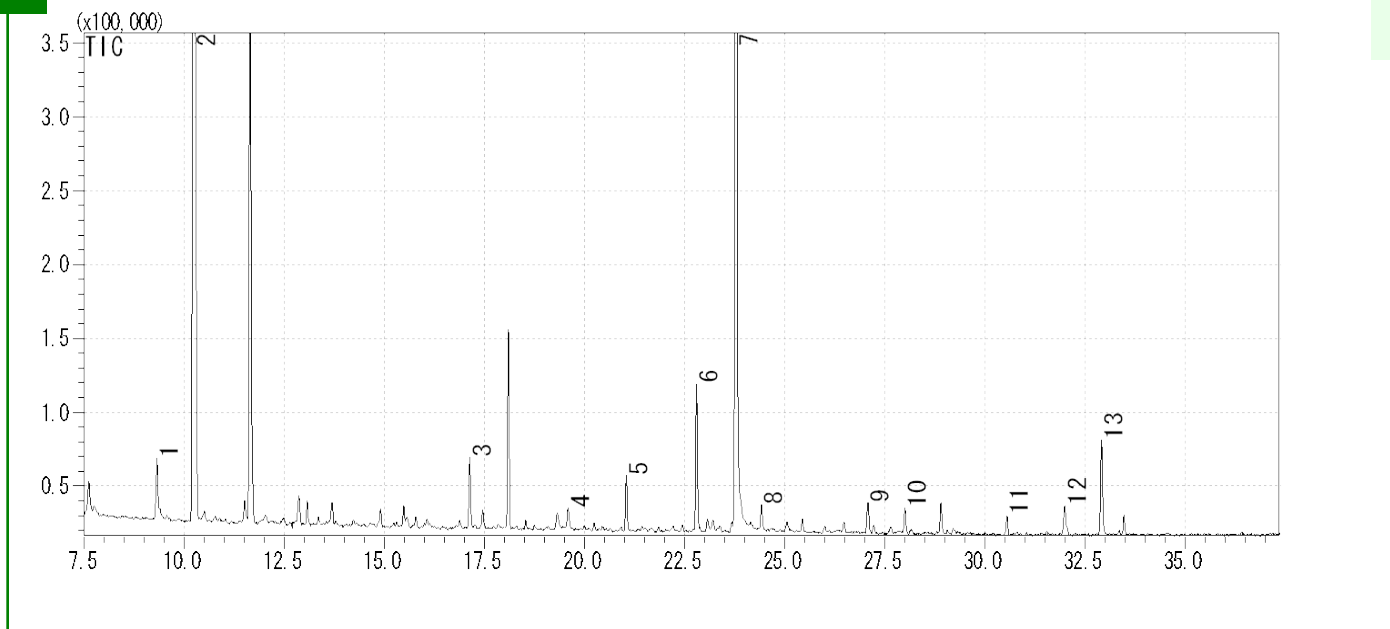
For example, with Shimadzu AOC20i+S, the combination of Shimadzu 12 × 32mm standard screw vial (8-425) (GLS Cat.1030-17105) and ⑤200µL glass insert can be used for a consecutive analysis as shown in the picture above, and it offers an easy operation from sampling to measurement.

In order to avoid the contact of MonoTrap® and a micro syringe, make sure to program that the deepest spot that the needle of micro syringe reaches is at least 6mm from the bottom of the vial.

MonoTrap® Convenient MonoTrap® Start-UP-KIT

	Description	Qty
①	MT Holder	5
②	MT Stand	1
③	MT Extract Cup with Vial(20ml)	5
④	Clean Pin Hole Septum with vial(40ml)	5
⑤	200 µ L Glass Insert (Flat Bottom)	40
⑥	MonoTrap® DCC18	20
⑦	MonoTrap® RCC18	20
⑧	MonoTrap® DSC18	20
⑨	MonoTrap® RSC18	20





1	β-Myrcene	8	Ethyl laevulinate
2	Limonene	9	α -Terpineol
3	cis-3-Hexenol	10	Citral
4	Furfural	11	β -Damascenone
5	Decanal	12	Benzyl Alcohol
6	β-Linalool	13	Phenylethyl Alcohol
7	Propylene Glycol		

Red ... Identification result of Standards

GC Condition

System : SHIMADZU GC-2010, GCMS-QP2010 ,AOC20i+S

Column : **InertCap Pure-WAX**(Cat.1010-68142)

0.25mmI.D. × 30m df=0.25 μ m

Column Temp : 40°C(5min)→6°C/min→250°C (5min)

Carrier Gas : He 95kPa

Injection : Split /Splitless, 1 μ L

250°C

Detection : MS Scan (m/z;55-400)

Ultra inert WAX column **InertCap Pure-WAX** is highly recommended to analyze aromatic compounds together with **MonoTrap®**