

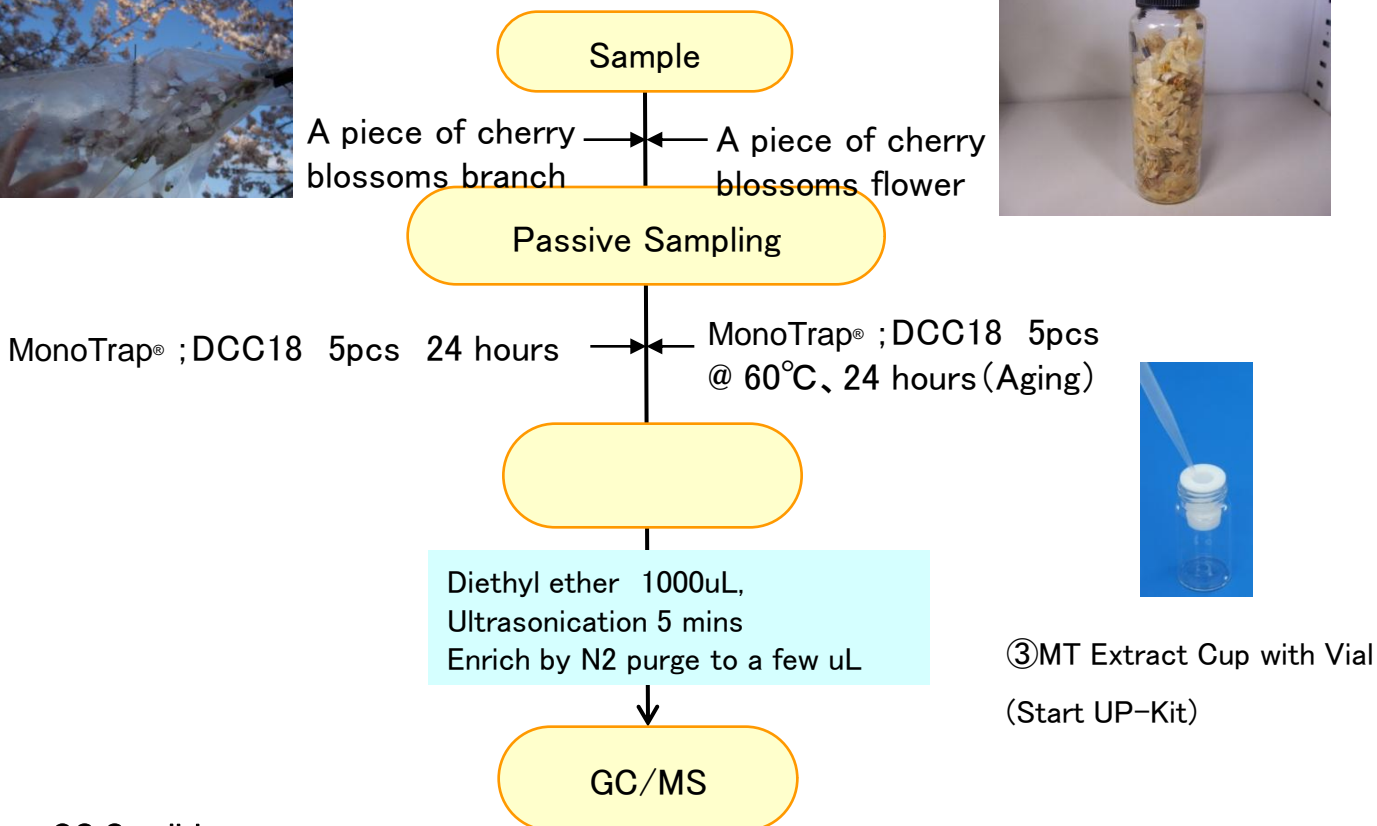
# Trace of Deterioration with Time for Cherry Blossoms Fragrance with MonoTrap®

## Protocol

### Cherry Blossoms



### Aging



### GC Condition

**System** : SHIMADZU GC-2010、GCMS-QP2010

**Column** : **InertCap Pure-WAX**(Cat.1010-68142)  
0.25mmI.D. × 30m df=0.25μ m

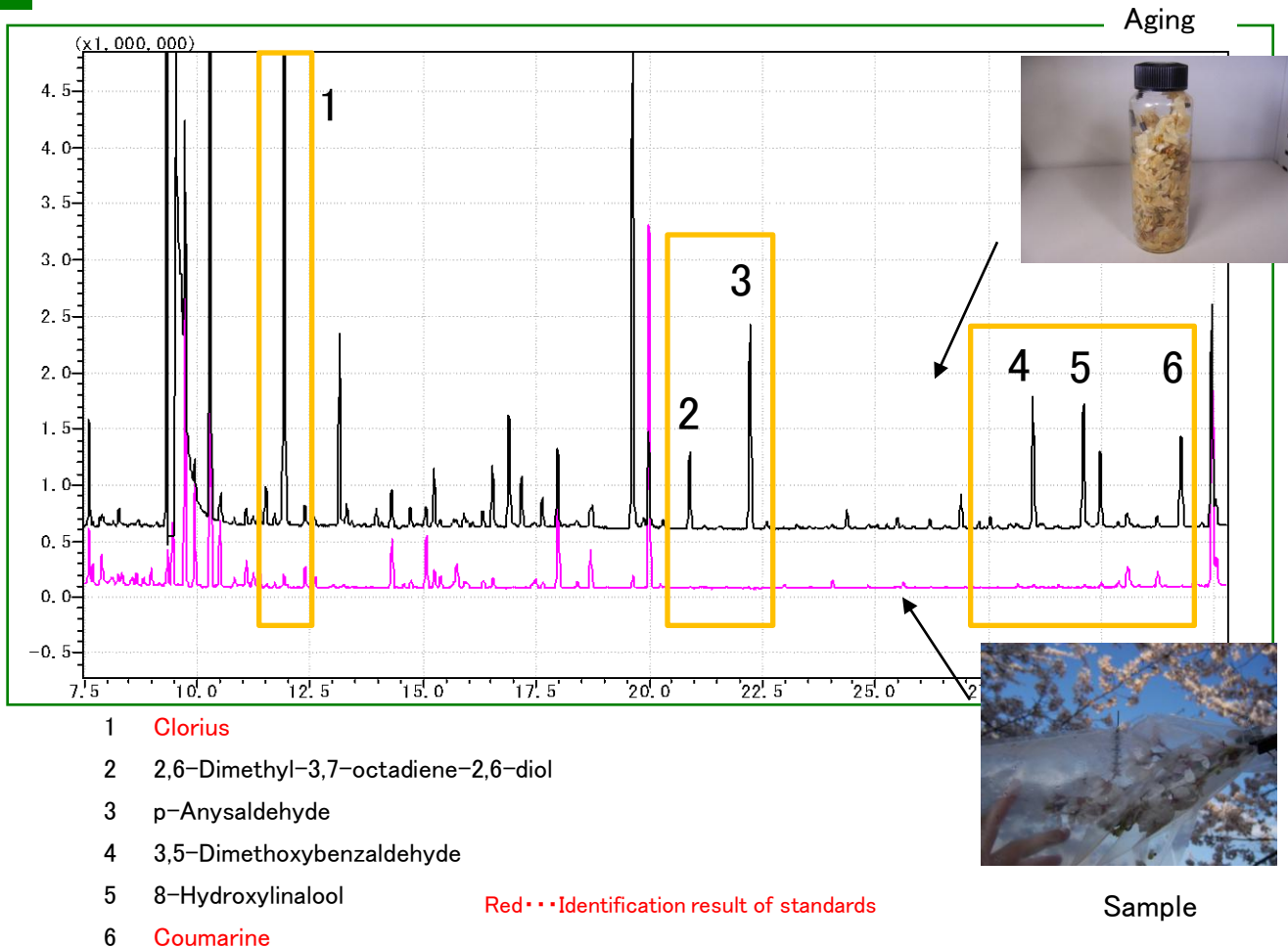
**Column Temp** : 40°C (5min) → 4°C/min → 180°C → 20°C/min → 250°C (5min)

**Carrier Gas** : He 120kPa

**Injection** : Split 1:10,1uL

**Detection** : MS Scan (m/z;40-350)

Ultra inert WAX column **InertCap Pure-WAX** is highly recommended to analyze aromatic compounds together with **MonoTrap®**



## MonoTrap® Convenient MonoTrap® Start-UP-KIT

	Description	Qty
①	MT Holder	5
②	MT Stand	1
③	MT Extract Cup with Vial(20ml)	5
④	Clean Pin Hole Septum with vial(40ml)	5
⑤	200μ L Glass Insert (Flat Bottom)	40
⑥	MonoTrap® DCC18	20
⑦	MonoTrap® RCC18	20
⑧	MonoTrap® DSC18	20
⑨	MonoTrap® RSC18	20

