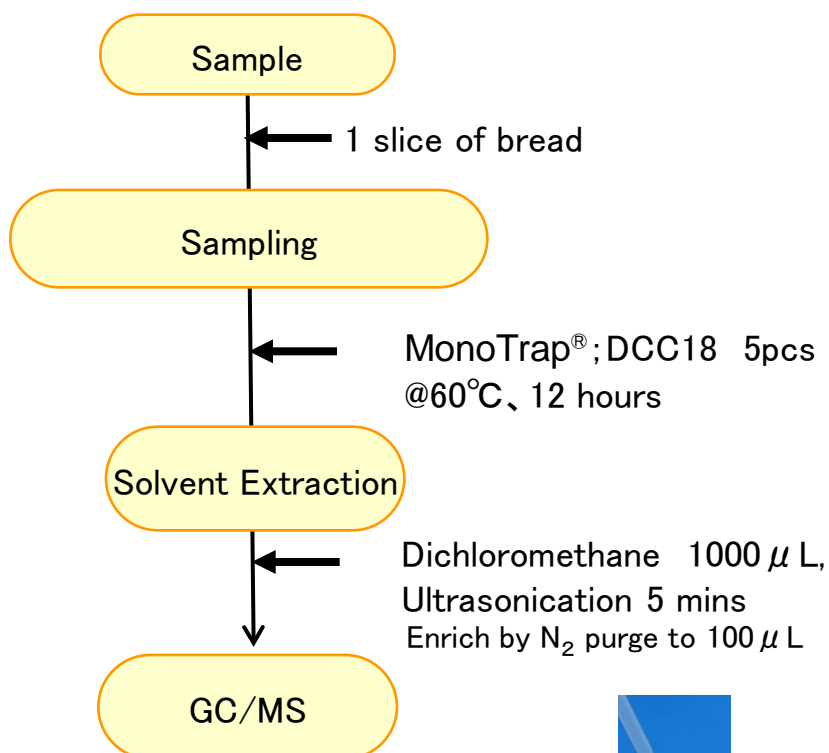
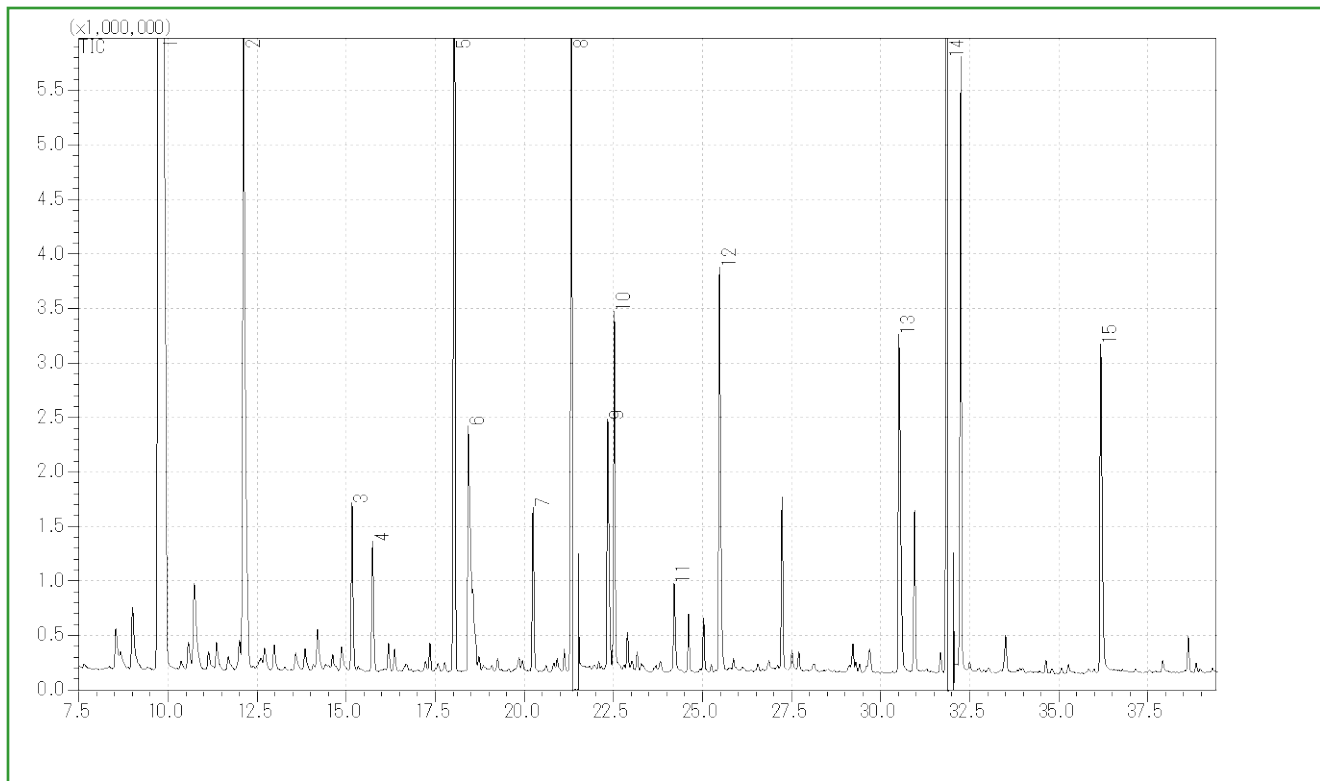


## Protocol



③MT Extract Cup with Vial

**GC Condition****System** : SHIMADZU GC-2010, GCMS-QP2010**Column** : InertCap Pure-WAX  
0.25mm I.D. × 30m df=0.25 μm**Column Temp** : 40°C (5min) → 4°C/min → 250°C (5min)GC Capillary Column: **InertCap Pure-WAX** 0.25mm I.D. × 30m df=0.25 μm Cat.1010-68142**Carrier Gas** : He 95kPa**Injection** : SplitLess, 1 μL  
250°C**Detection** : MS Scan (m/z; 25-450)



- |   |                        |    |                     |
|---|------------------------|----|---------------------|
| 1 | Isopentyl alcohol      | 9  | Isobutyric acid     |
| 2 | Acetyl methyl carbinol | 10 | 2,3-Butanediol      |
| 3 | 1-Hexanol              | 11 | Butanoic acid       |
| 4 | 3-Ethoxy-1-propanol    | 12 | Isovaleric acid     |
| 5 | Ethyl caprylate        | 13 | Hexanoic acid       |
| 6 | Acetic acid            | 14 | Phenylethyl alcohol |
| 7 | Benzaldehyde           | 15 | Octanoic acid       |
| 8 | 2,3-Butanediol         |    |                     |

Ultra inert WAX column **InertCap Pure-WAX** is highly recommended to analyze aromatic compounds together with **MonoTrap®**

<http://www.gls.co.jp/gc.html>