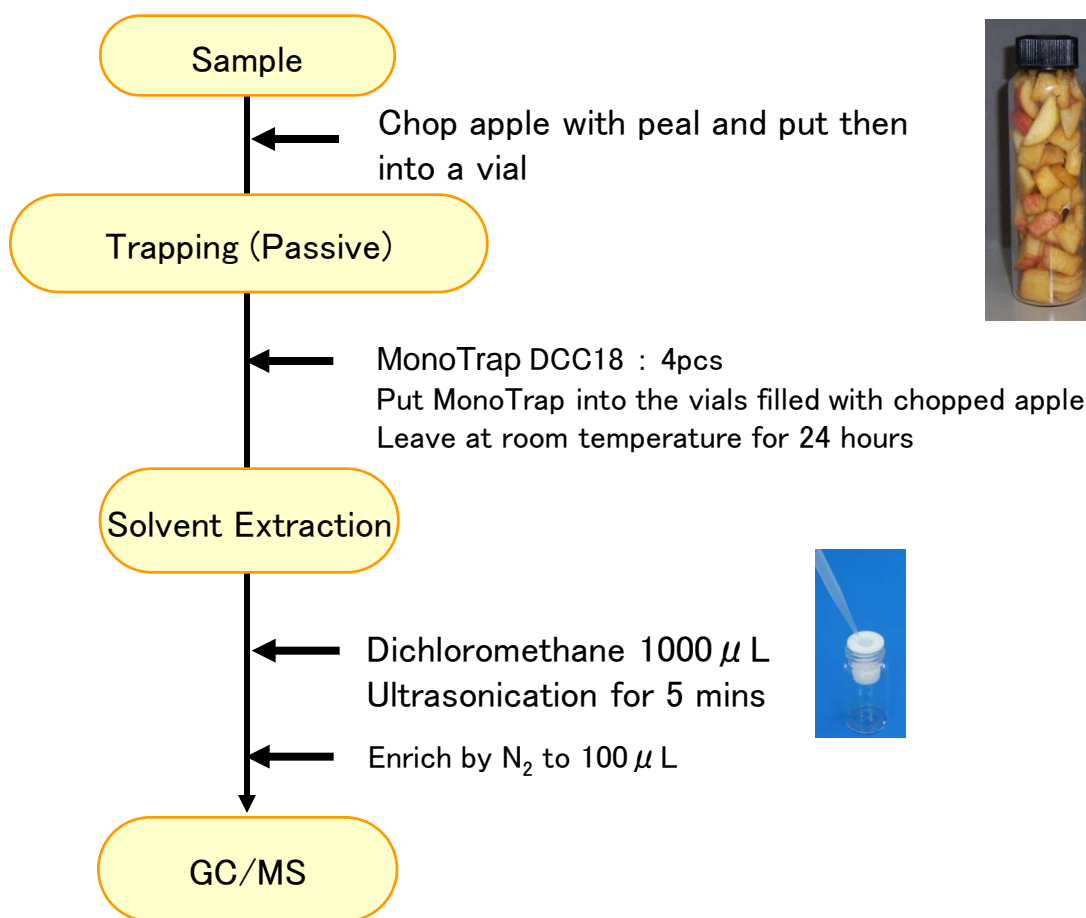


## Protocol

**GC Condition**

**System** : SHIMADZU GC-2010, GCMS-QP2010

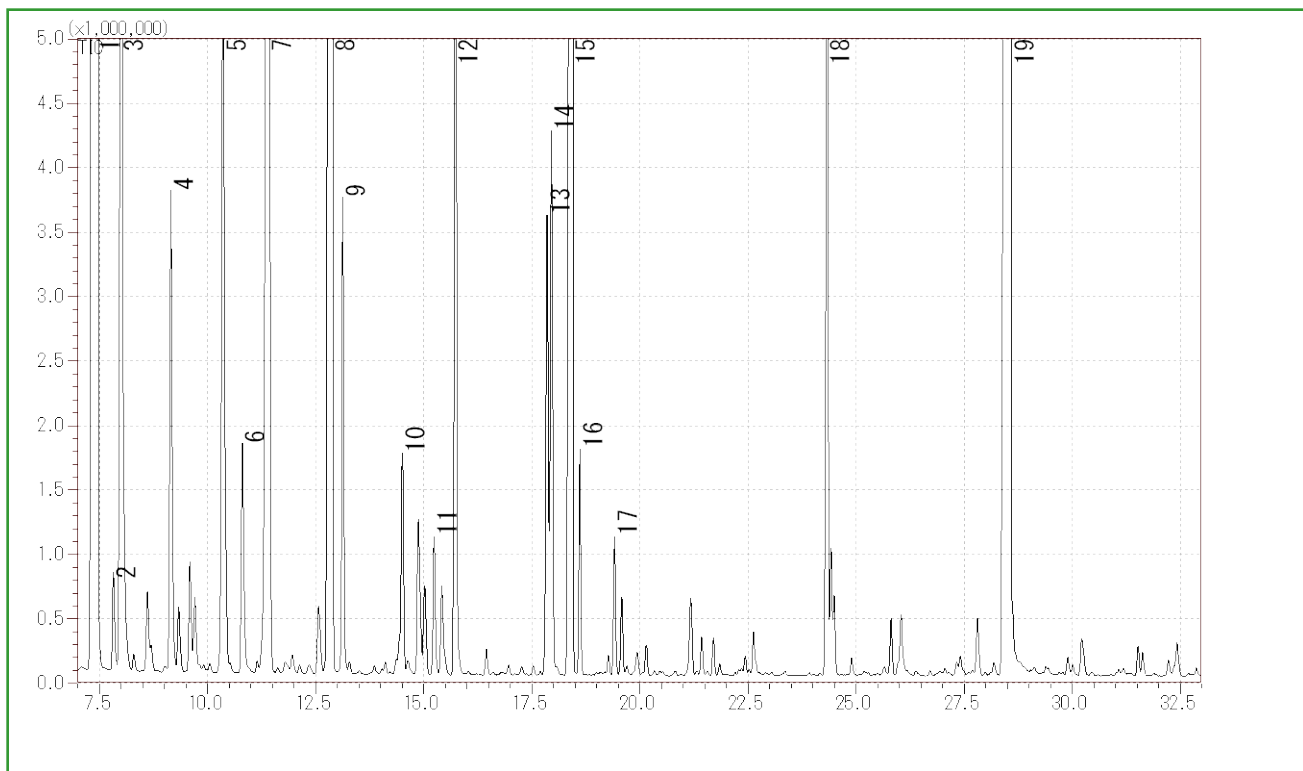
**Column** : InertCap Pure-WAX Cat.1010-68142  
0.25mmI.D. × 30m df=0.25  $\mu$  m

**Column Temp** : 40°C (5min) → 4°C/min → 250°C

**Carrier Gas** : He 65kPa

**Injection** : Splitless, 1  $\mu$  L  
250°C

**Detection** : MS Scan (m/z;35-400)



- |    |                                 |    |                        |
|----|---------------------------------|----|------------------------|
| 1  | 3-methylbutylacetate            | 11 | Hexyl propanoate       |
| 2  | Ethyl pentanoate                | 12 | <b>1-Hexanol</b>       |
| 3  | Propyl 2-methylbutanoate        | 13 | <b>Butyl caproate</b>  |
| 4  | <b>Amyl acetate</b>             | 14 | <b>Hexyl butanoate</b> |
| 5  | 2-methyl-1-butanol              | 15 | Hexyl 2-methylbutyrate |
| 6  | Butyl butanoate                 | 16 | Ethyl caprylate        |
| 7  | Ethyl caproate                  | 17 | Isoamyl caproate       |
| 8  | <b>Hexyl acetate</b>            | 18 | Hexyl caproate         |
| 9  | 2-Methylbutyl 2-methylbutanoate | 19 | $\alpha$ -Farnesene    |
| 10 | Propyl caproate                 |    |                        |