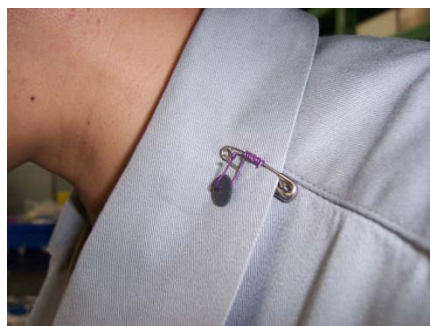
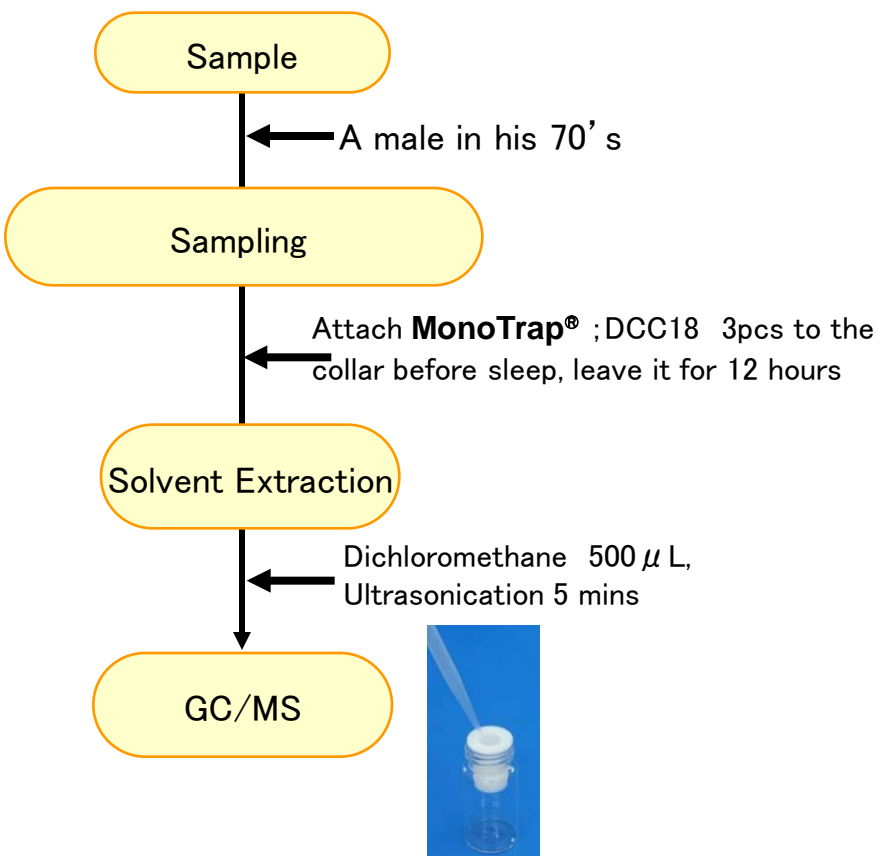


Easy Enrichment of Aging Body Odor with MonoTrap®

Protocol



Ref) How to attach MonoTrap



Ultra inert WAX column **InertCap Pure-WAX** is highly recommended to analyze aromatic compounds together with **MonoTrap®**

MonoTrap® Series

cat.No	Description	Shape	Size	Active Carbon	Functional Group
1050-72101	MonoTrap DCC18	Disk	O.D.10mmx thick 1mm	Yes	C18
1050-72201	MonoTrap RCC18	Rod	5mm	Yes	C18
1050-71101	MonoTrap DSC18	Disk	O.D.10mmx thick 1mm	No	C18
1050-71201	MonoTrap RSC18	Rod	5mm	No	C18



DCC18



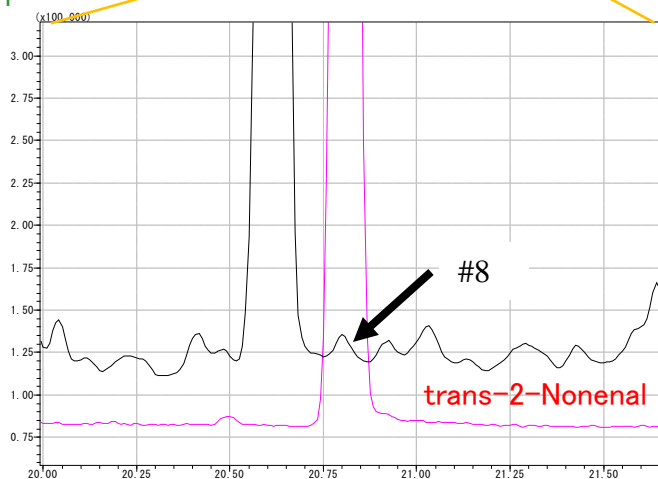
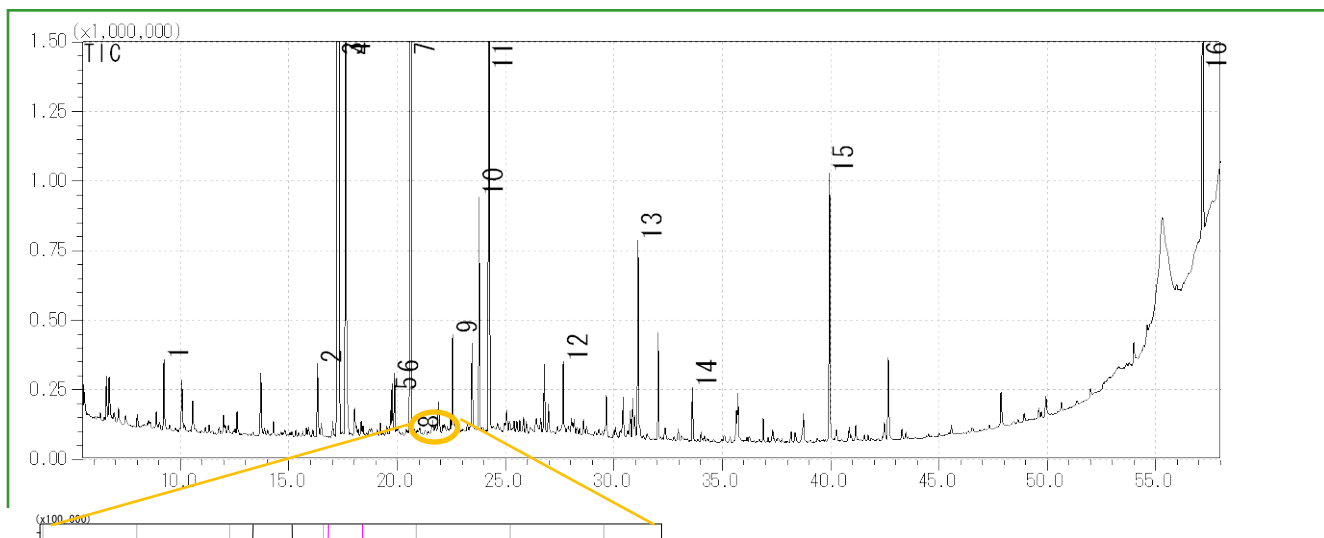
RCC18



DSC18



RSC18



GC Condition

System : SHIMADZU GC-2010, GCMS-QP2010Plus
Column : InertCap Pure-WAX(Cat.1010-68142)
 0.25mmI.D. × 30m df=0.25 μm
Column Temp : 40°C (5min) → 4°C/min → 250°C (5min)
Carrier Gas : He 120kPa
Injection : Splitless, 1 μL
Detection : MS Scan (m/z;20-350)

- | | |
|---------------------|--|
| 1 D-Limonene | 9 Propylene Glycol |
| 2 Nonanal | 10 Heptadecane |
| 3 Tetradecane | 11 Menthol |
| 4 m-Dichlorobenzene | 12 Salicylic acid, methyl ester |
| 5 2-Ethyl-1-hexanol | 13 Ceraphyl 230 ← Emollient Agent |
| 6 Decanal | 14 1-Dodecanol |
| 7 Pentadecane | 15 Crotamiton ← Cream that the sample put on his body before sleep |
| 8 trans-2-Nonenal | 16 trans-Squalene |

<http://www.gls.co.jp/gc.html>